

The Winthrop

The Avalon Collection

Engineered homes built magnificently, promptly, affordably.

Multifamily

Each Unit
3 Bedrooms
1 Bath

46'-0" x 27'-6"
(each unit)

Living Area 995 s.f.

Total 3 Unit 3795 s.f.

(Shown with optional
porch)

The Winthrop plan is a three story multi-family plan with a unit on each level. Each unit features three bedrooms and one bathroom. There is also access from two stair wells in the front and rear of the building. This plan is a great option for tight lots.

(Shown with optional porch)



560 Turnpike Street
Canton, MA 02021

Phone: 781-828-2100

Fax: 781-828-1050

Info@avalonbuildingsystems.com
www.avalonbuildingsystems.com

The Winthrop

The Avalon Collection

Engineered homes built magnificently, promptly, affordably.

Multifamily

Each Unit
3 Bedrooms
1 Bath

46'-0" x 27'-6"
(each unit)

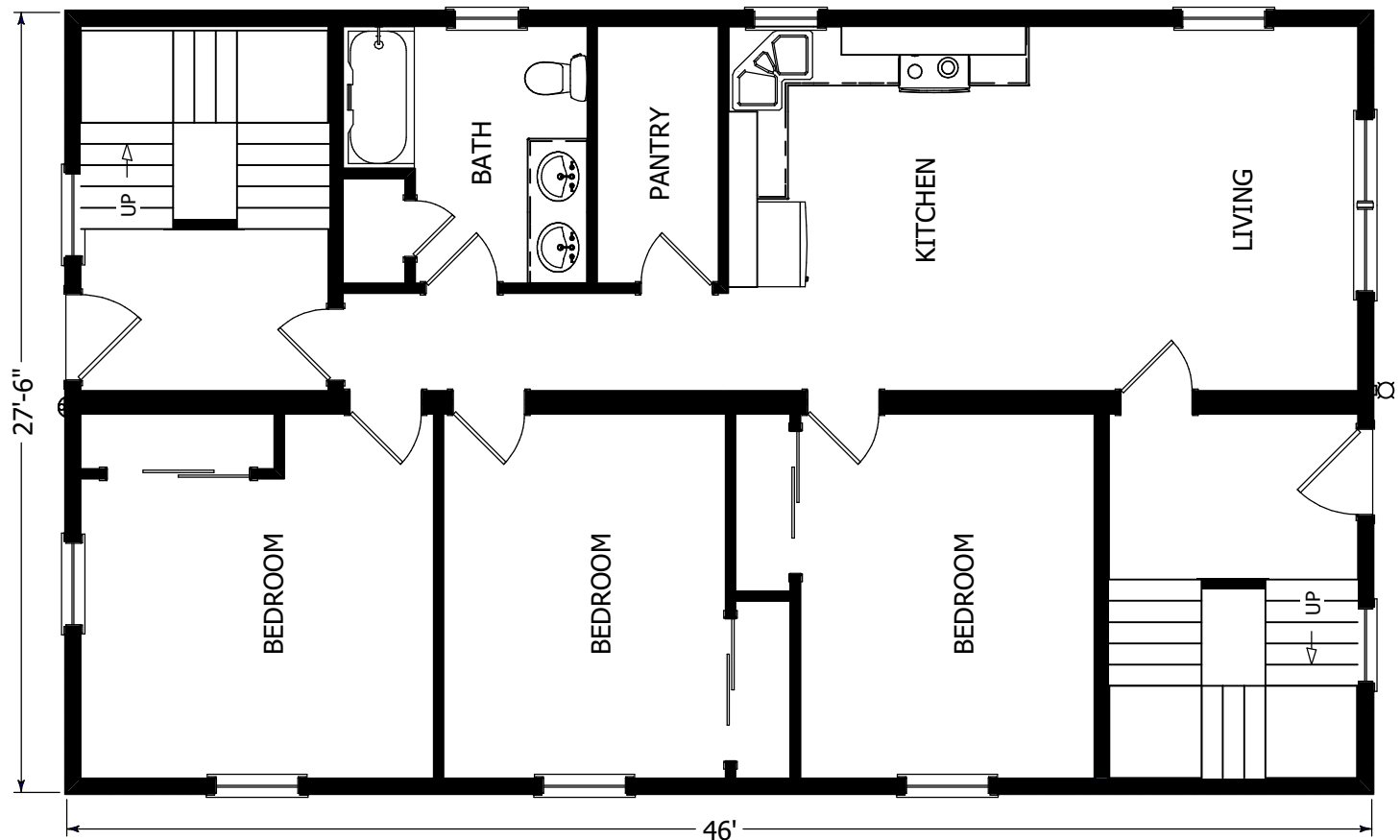
Living Area 995 s.f.

Total 3 Unit 3795 s.f.

(Shown with optional
porch)

The Winthrop plan is a three story multi-family plan with a unit on each level. Each unit features three bedrooms and one bathroom. There is also access from two stair wells in the front and rear of the building. This plan is a great option for tight lots.

(Shown with optional porch)



Typical Floor Plan



560 Turnpike Street

Canton, MA 02021

Phone: 781-828-2100

Fax: 781-828-1050

Info@avalonbuildingsystems.com

www.avalonbuildingsystems.com