

The Melrose

The Avalon Collection

Engineered homes built magnificently, promptly, affordably.

Mulifamily

Typical Unit
2 Bedrooms
1 1/2 Bath

39'-6" x 13'-9"

1st Floor 533 s.f.

2nd Floor 533 s.f.

Total Unit Square
Footage 1066 s.f.

(Shown with optional
porch)

The Melrose plan is a multi-family style plan which features two bedrooms in each unit. The plan contains two floors and the option to add as many units as necessary. The first floor features a wonderful open concept layout, which includes a laundry closet.

(Shown with optional porch)



560 Turnpike Street
Canton, MA 02021

Phone: 781-828-2100

Fax: 781-828-1050

Info@avalonbuildingsystems.com
www.avalonbuildingsystems.com

The Melrose

The Avalon Collection

Engineered homes built magnificently, promptly, affordably.

Mulifamily

Typical Unit
2 Bedrooms
1 1/2 Bath

39'-6" x 13'-9"

1st Floor 533 s.f.

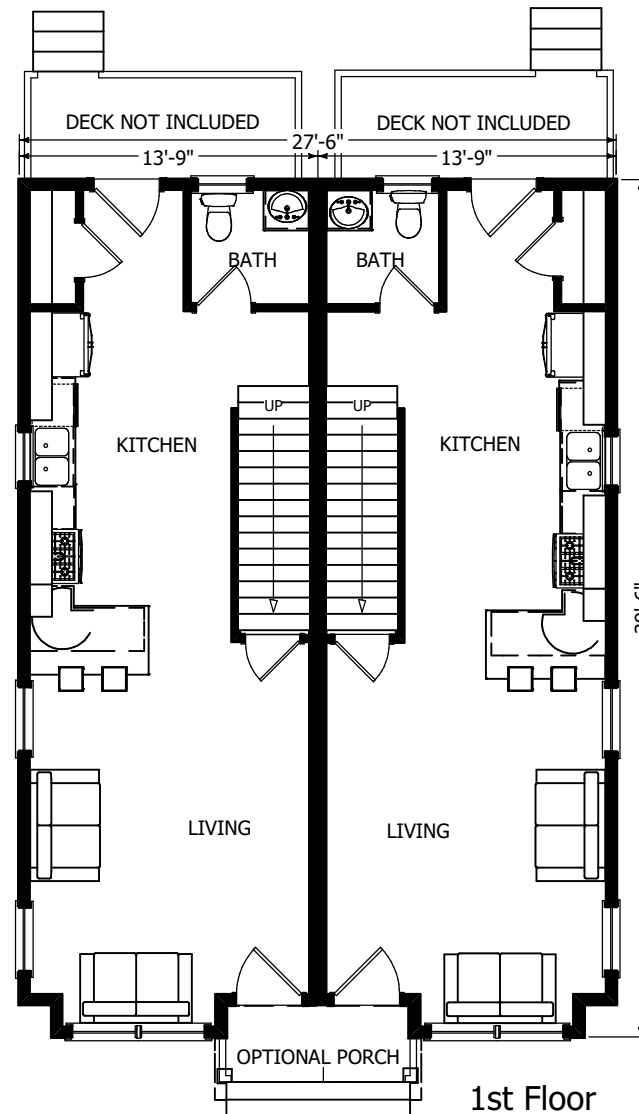
2nd Floor 533 s.f.

Total Unit Square
Footage 1066 s.f.

(Shown with optional
porch)

The Melrose plan is a multi-family style plan which features two bedrooms in each unit. The plan contains two floors and the option to add as many units as necessary. The first floor features a wonderful open concept layout, which includes a laundry closet.

(Shown with optional porch)



560 Turnpike Street
Canton, MA 02021

Phone: 781-828-2100

Fax: 781-828-1050

Info@avalonbuildingsystems.com
www.avalonbuildingsystems.com

The Melrose

The Avalon Collection

Engineered homes built magnificently, promptly, affordably.

Mulifamily

Typical Unit
2 Bedrooms
1 1/2 Bath

39'-6" x 13'-9"

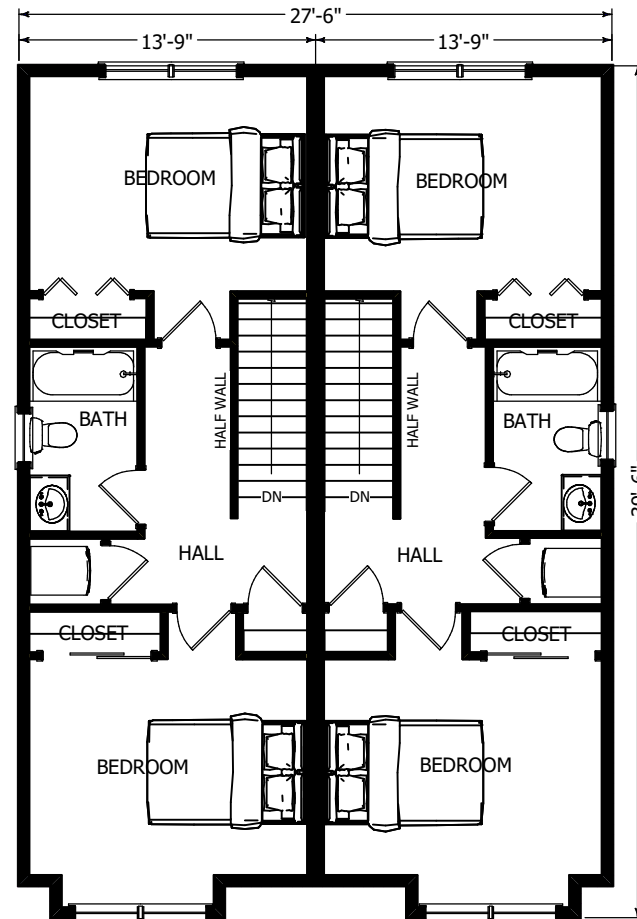
1st Floor 533 s.f.

2nd Floor 533 s.f.

Total Unit Square
Footage 1066 s.f.

(Shown with optional
porch)

The Melrose plan is a multi-family style plan which features two bedrooms in each unit. The plan contains two floors and the option to add as many units as necessary. The first floor features a wonderful open concept layout, which includes a laundry closet. (Shown with optional porch)



2nd Floor



560 Turnpike Street
Canton, MA 02021

Phone: 781-828-2100

Fax: 781-828-1050

Info@avalonbuildingsystems.com
www.avalonbuildingsystems.com