

# The Lynnfield

# The Avalon Collection

*Engineered homes built magnificently, promptly, affordably.*

## Townhouses

Typical Unit  
2 Bedrooms  
2 1/2 Baths

48'-0" x 15'-9"  
(each unit)

1st Floor Living Area  
756 s.f.

2nd Floor Living Area  
756 s.f.

Total Living Area  
1512 s.f.

Total Living Area  
as shown 6048 s.f.

(Shown with optional  
dormers)

The Lynnfield plan is a Townhouse style plan. Each unit features two bedrooms and three bathrooms. The kitchen and living area is an open floor plan. There is also an option to build a garage below as shown.

(Shown with optional dormers)



560 Turnpike Street  
Canton, MA 02021  
Phone: 781-828-2100  
Fax: 781-828-1050

Info@avalonbuildingsystems.com  
www.avalonbuildingsystems.com

# The Lynnfield

# The Avalon Collection

Engineered homes built magnificently, promptly, affordably.

## Townhouses

### Typical Unit 2 Bedrooms 2 1/2 Baths

48'-0" x 15'-9"  
(each unit)

1st Floor Living Area  
756 s.f.

2nd Floor Living Area  
756 s.f.

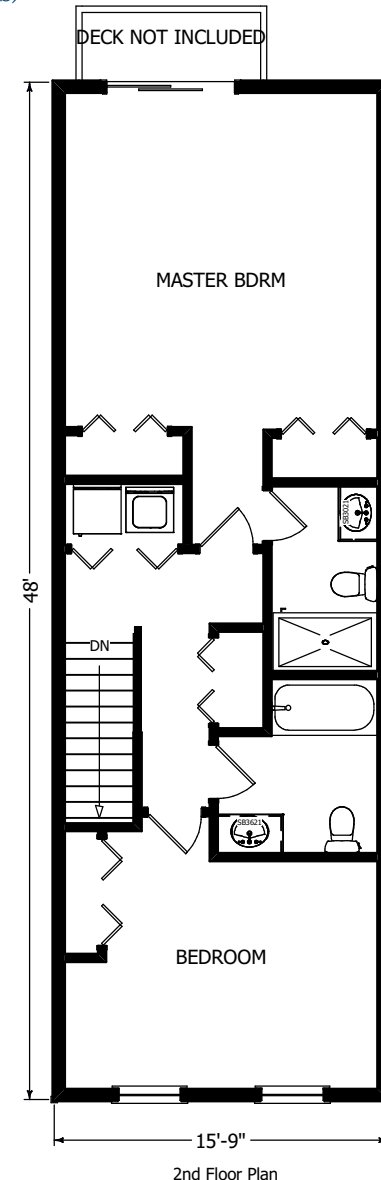
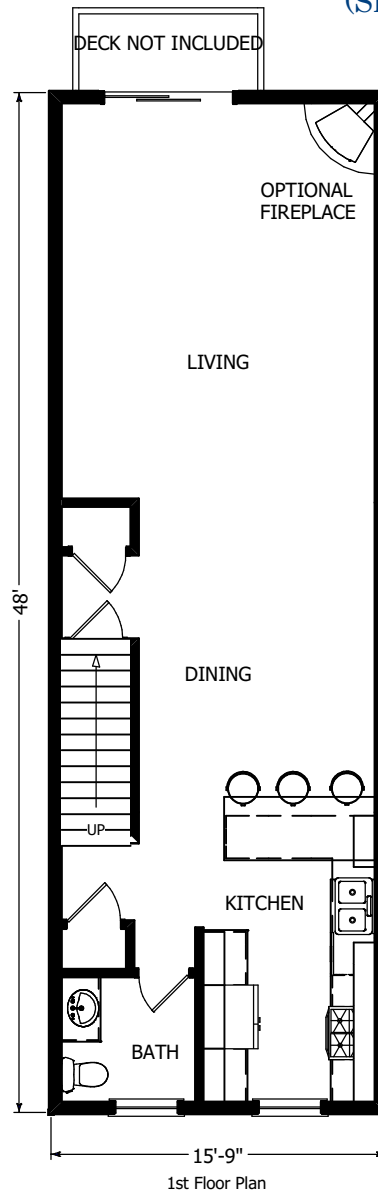
Total Living Area  
1512 s.f.

Total Living Area  
as shown 6048 s.f.

(Shown with optional  
dormers)

The Lynnfield plan is a Townhouse style plan. Each unit features two bedrooms and three bathrooms. The kitchen and living area is an open floor plan. There is also an option to build a garage below as shown.

(Shown with optional dormers)



560 Turnpike Street  
Canton, MA 02021  
Phone: 781-828-2100  
Fax: 781-828-1050

Info@avalonbuildingsystems.com  
www.avalonbuildingsystems.com