

The Chesapeake

The Avalon Collection

Engineered homes built magnificently, promptly, affordably.

Multifamily

3 Bedrooms

2 1/2 Baths

29'-0" x 25'-0"

1st Floor Living Area
706 s.f.

2nd Floor Living Area
706 s.f.

Total Living Area
1412 s.f.

(Shown with optional
front porch)

The Chesapeake plan is a multifamily plan which features three bedrooms in each unit.

The plan contains two floors and the option to add as many units as necessary.

(Shown with optional front porch)



560 Turnpike Street

Canton, MA 02021

Phone: 781-828-2100

Fax: 781-828-1050

Info@avalonbuildingsystems.com

www.avalonbuildingsystems.com

The Chesapeake

The Avalon Collection

Engineered homes built magnificently, promptly, affordably.

Multifamily

3 Bedrooms

2 1/2 Baths

29'-0" x 25'-0"

1st Floor Living Area
706 s.f.

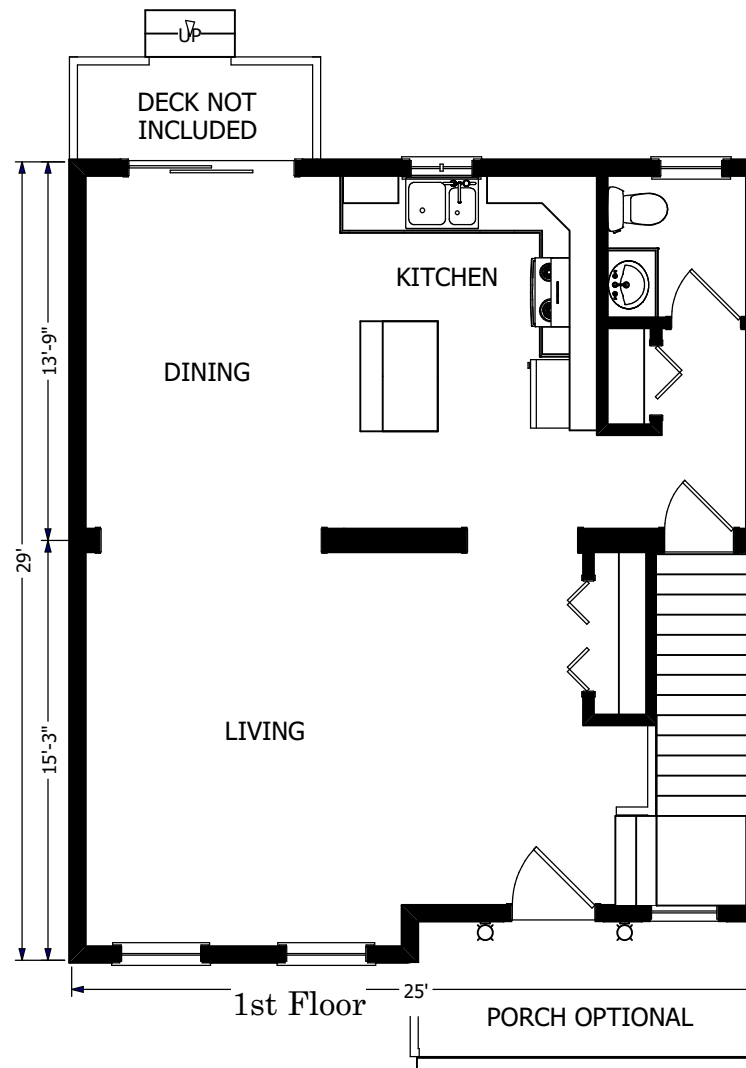
2nd Floor Living Area
706 s.f.

Total Living Area
1412 s.f.

(Shown with optional
front porch)

The Chesapeake plan is a multifamily plan which features three bedrooms in each unit. The plan contains two floors and the option to add as many units as necessary.

(Shown with optional front porch)



560 Turnpike Street
Canton, MA 02021

Phone: 781-828-2100

Fax: 781-828-1050

Info@avalonbuildingsystems.com
www.avalonbuildingsystems.com

The Chesapeake

The Avalon Collection

Engineered homes built magnificently, promptly, affordably.

Multifamily

3 Bedrooms

2 1/2 Baths

29'-0" x 25'-0"

1st Floor Living Area
706 s.f.

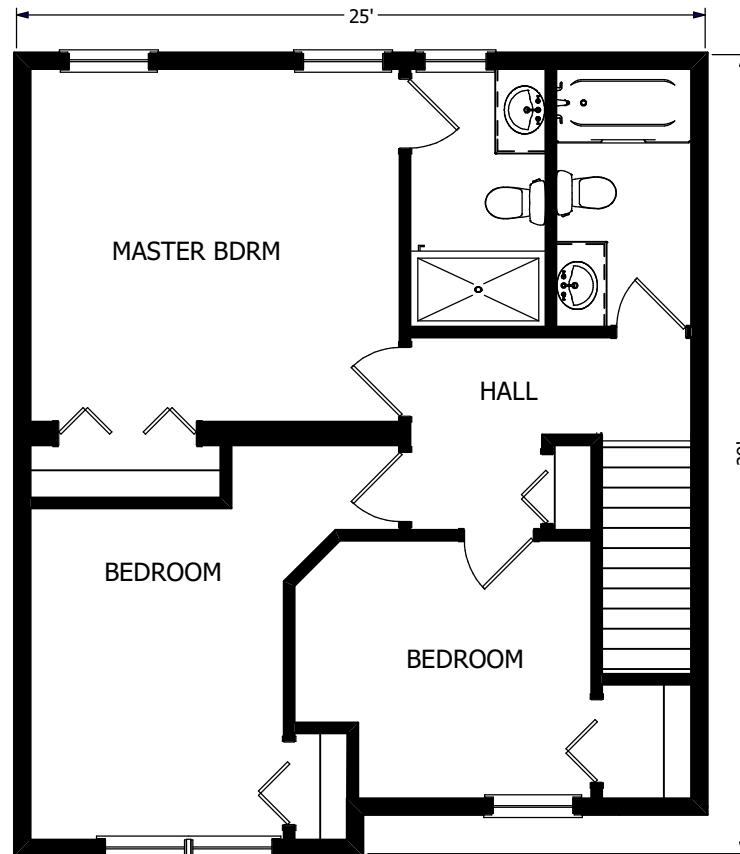
2nd Floor Living Area
706 s.f.

Total Living Area
1412 s.f.

(Shown with optional
front porch)

The Chesapeake plan is a multifamily plan which features three bedrooms in each unit. The plan contains two floors and the option to add as many units as necessary.

(Shown with optional front porch)



2nd Floor



560 Turnpike Street
Canton, MA 02021

Phone: 781-828-2100

Fax: 781-828-1050

Info@avalonbuildingsystems.com
www.avalonbuildingsystems.com