

The Ashmont

The Avalon Collection

Engineered homes built magnificently, promptly, affordably.

Multi-Family

Typical Unit
3 Bedrooms
2 Bath

56'-0" x 27'-6"
(each unit)

1st Floor 1500 s.f.

2nd Floor 1500 s.f.

Total Living Area
3000 s.f.

The Ashmont plan is a multi-family style plan. Each unit features three bedrooms and two bathrooms. The kitchen and living area is an open floor plan. The plan is great for a narrow lot.



560 Turnpike Street
Canton, MA 02021

Phone: 781-828-2100

Fax: 781-828-1050

Info@avalonbuildingsystems.com
www.avalonbuildingsystems.com

The Ashmont

The Avalon Collection

Engineered homes built magnificently, promptly, affordably.

Multi-Family

Typical Unit
3 Bedrooms
2 Bath

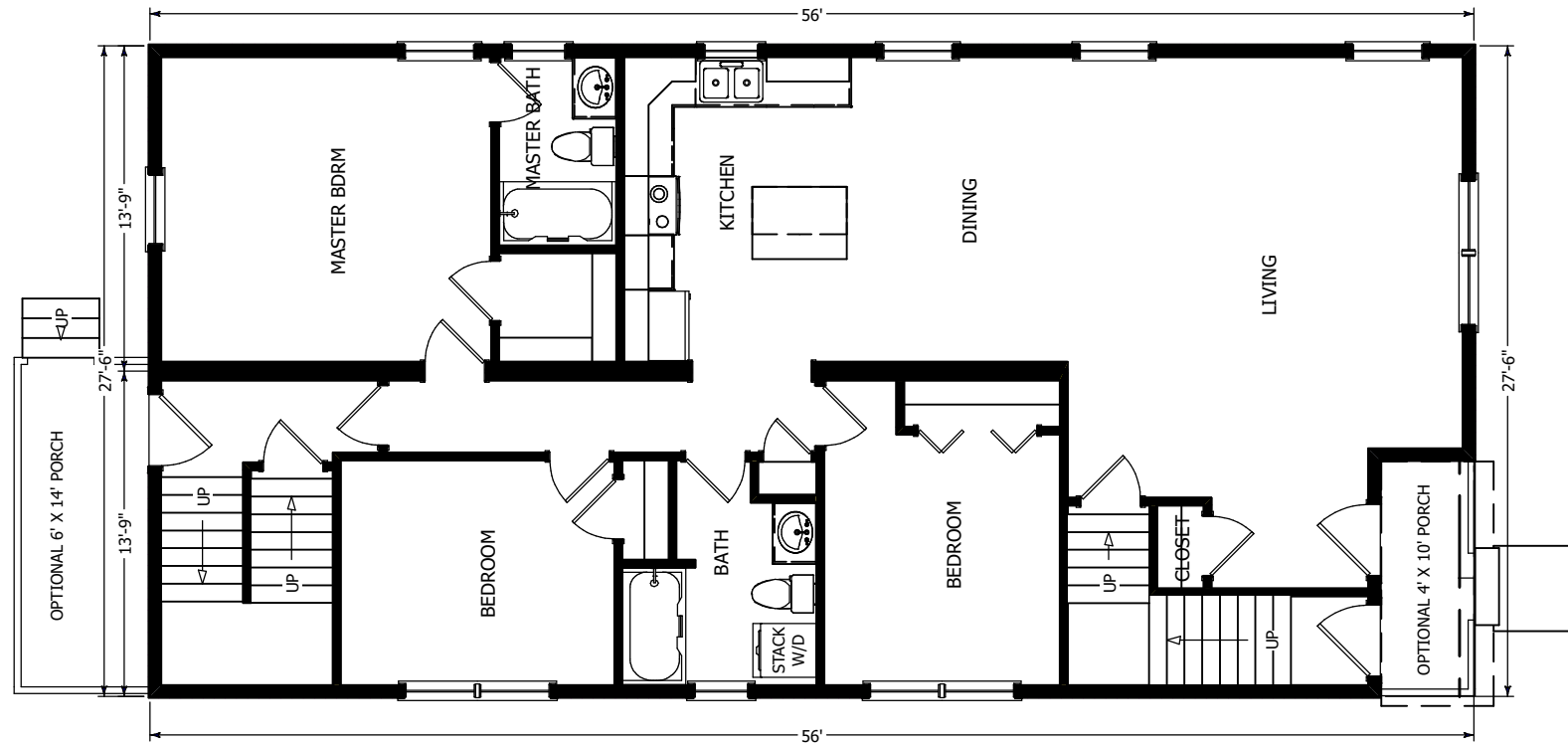
56'-0" x 27'-6"
(each unit)

1st Floor 1500 s.f.

2nd Floor 1500 s.f.

Total Living Area
3000 s.f.

The Ashmont plan is a multi-family style plan. Each unit features three bedrooms and two bathrooms. The kitchen and living area is an open floor plan. The plan is great for a narrow lot.



1st Floor Plan



560 Turnpike Street
Canton, MA 02021

Phone: 781-828-2100

Fax: 781-828-1050

Info@avalonbuildingsystems.com
www.avalonbuildingsystems.com

The Ashmont

The Avalon Collection

Engineered homes built magnificently, promptly, affordably.

Multi-Family

Typical Unit
3 Bedrooms
2 Bath

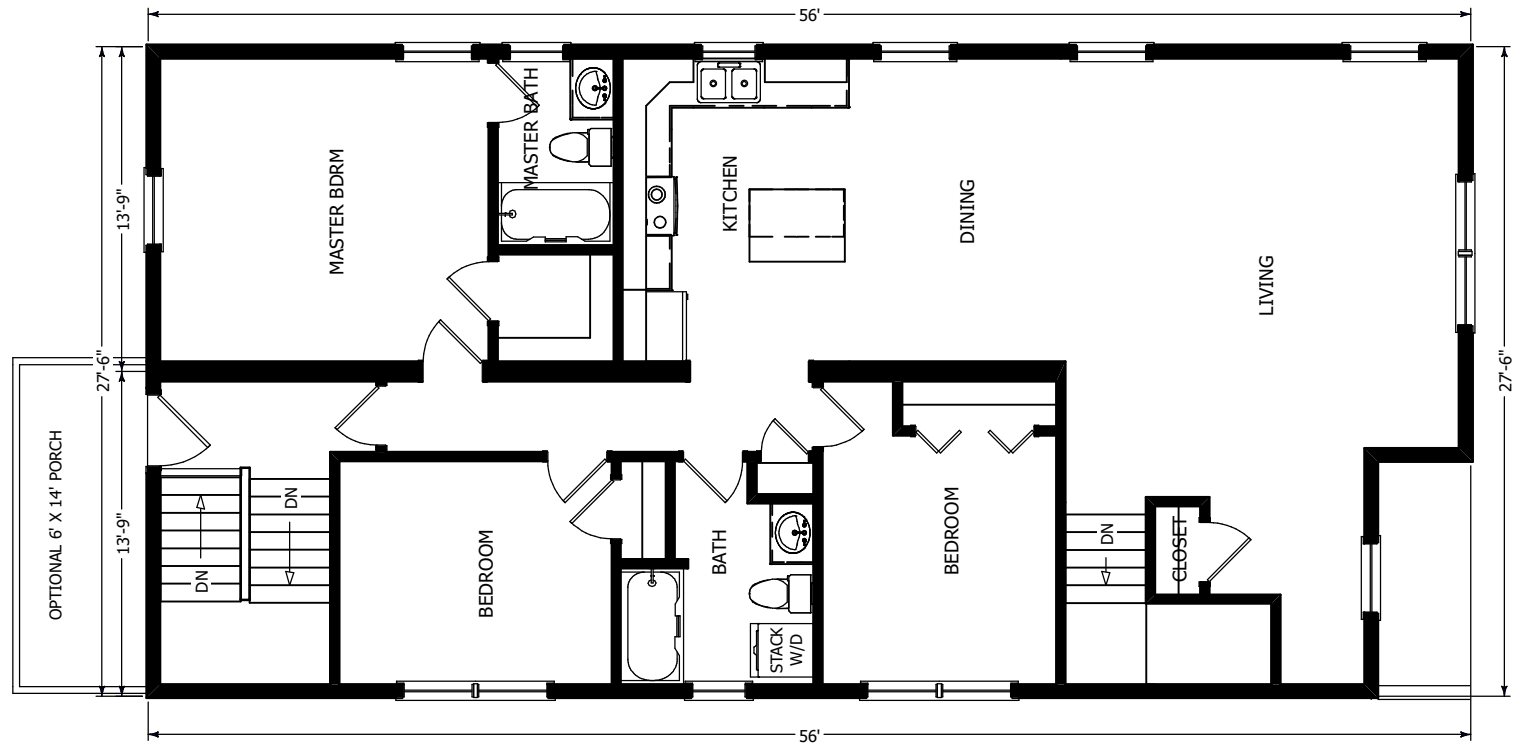
56'-0" x 27'-6"
(each unit)

1st Floor 1500 s.f.

2nd Floor 1500 s.f.

Total Living Area
3000 s.f.

The Ashmont plan is a multi-family style plan. Each unit features three bedrooms and two bathrooms. The kitchen and living area is an open floor plan. The plan is great for a narrow lot.



2nd Floor Plan



560 Turnpike Street
Canton, MA 02021

Phone: 781-828-2100

Fax: 781-828-1050

Info@avalonbuildingsystems.com
www.avalonbuildingsystems.com