

# The Andover

# The Avalon Collection

*Engineered homes built magnificently, promptly, affordably.*

Multifamily

2 Bedrooms  
2 Baths  
(each unit)

90'-6" x 70'-0"

Each Unit 1355 s.f.

Each Floor 6082 s.f.

Total 24,328 s.f.

The Andover is a lovely four story apartment building. The plan features four bedrooms and two bathrooms per unit and boasts an open living area.



560 Turnpike Street  
Canton, MA 02021

Phone: 781-828-2100

Fax: 781-828-1050

Info@avalonbuildingsystems.com  
www.avalonbuildingsystems.com

# The Andover

# The Avalon Collection

Engineered homes built magnificently, promptly, affordably.

Multifamily

2 Bedrooms  
2 Baths  
(each unit)

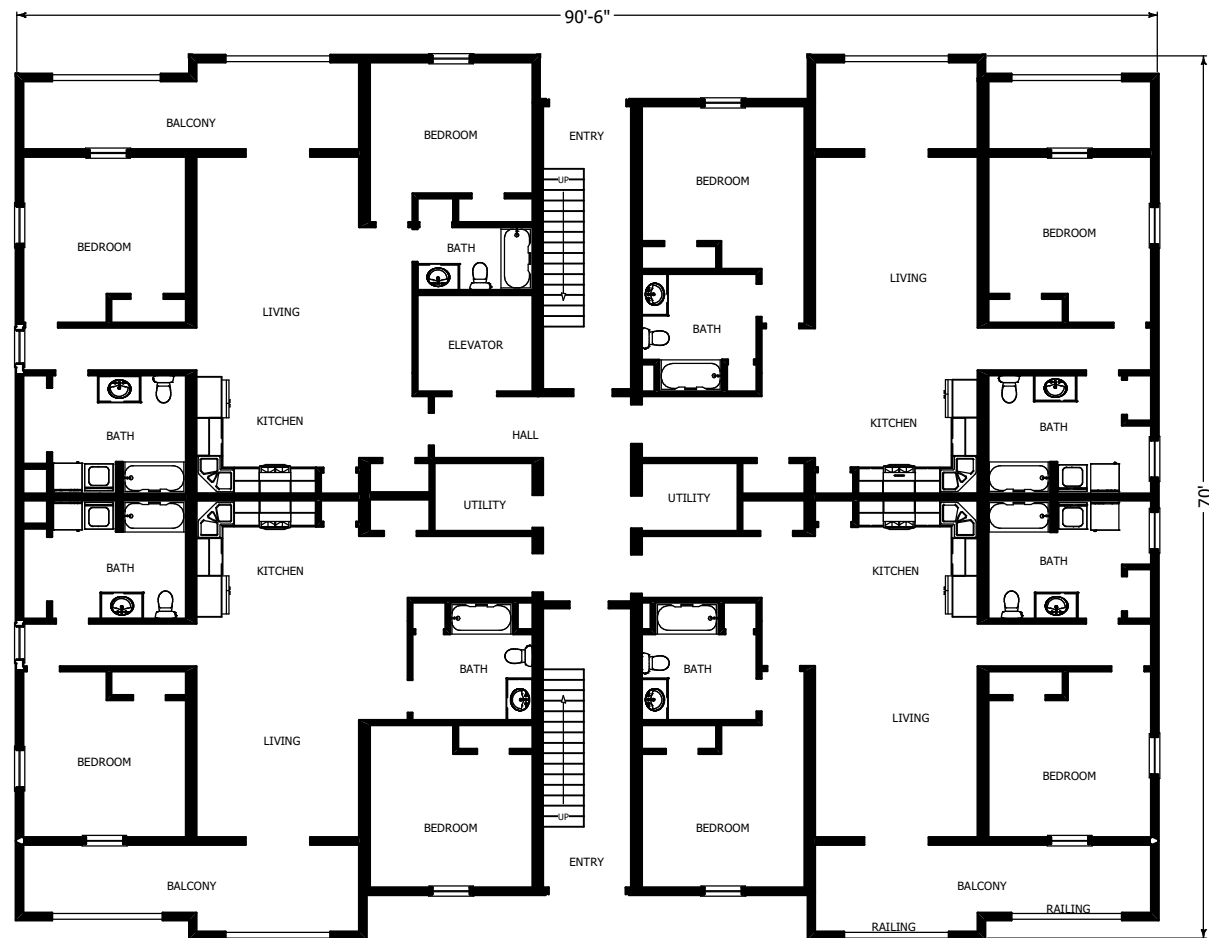
90'-6" x 70'-0"

Each Unit 1355 s.f.

Each Floor 6082 s.f.

Total 24,328 s.f.

The Andover is a lovely four story apartment building. The plan features four bedrooms and two bathrooms per unit and boasts an open living area.



560 Turnpike Street  
Canton, MA 02021

Phone: 781-828-2100

Fax: 781-828-1050

Info@avalonbuildingsystems.com  
www.avalonbuildingsystems.com

# The Andover

# The Avalon Collection

Engineered homes built magnificently, promptly, affordably.

Multifamily

2 Bedrooms  
2 Baths  
(each unit)

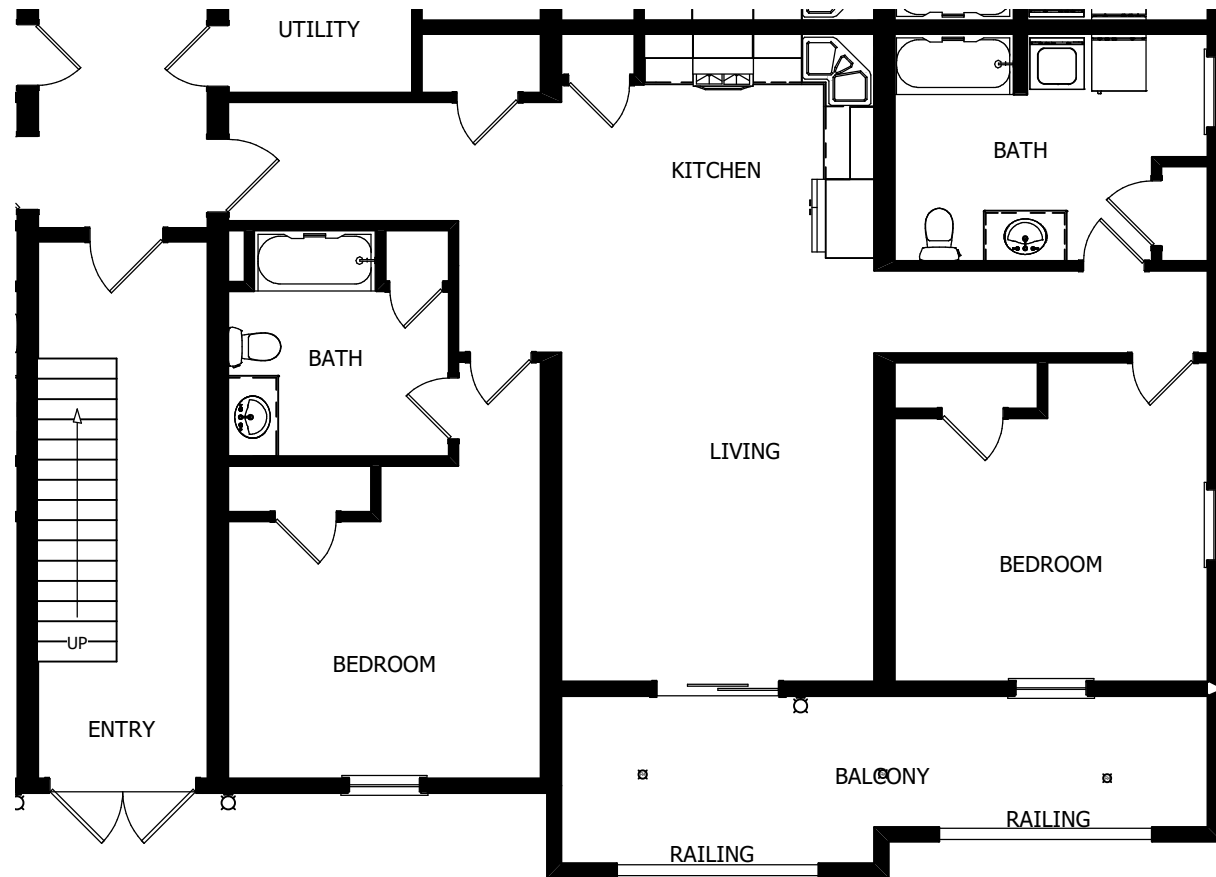
90'-6" x 70'-0"

Each Unit 1355 s.f.

Each Floor 6082 s.f.

Total 24,328 s.f.

The Andover is a lovely four story apartment building. The plan features four bedrooms and two bathrooms per unit and boasts an open living area.



UNIT PLAN



560 Turnpike Street  
Canton, MA 02021

Phone: 781-828-2100

Fax: 781-828-1050

Info@avalonbuildingsystems.com  
www.avalonbuildingsystems.com