

The Amesbury

The Avalon Collection

Engineered homes built magnificently, promptly, affordably.

Multifamily

2 Bedrooms
1 Bath
(each unit)

60'-0" x 27'-6"

Each Unit 825 s.f.

Total Square Footage
1650 s.f.

(Shown with optional
front porch)

The Amesbury is a single-story multi-family plan. It offers two bedrooms and one bathroom per unit.

(Shown with optional front porch)



560 Turnpike Street
Canton, MA 02021

Phone: 781-828-2100

Fax: 781-828-1050

Info@avalonbuildingsystems.com
www.avalonbuildingsystems.com

The Amesbury

The Avalon Collection

Engineered homes built magnificently, promptly, affordably.

Multifamily

2 Bedrooms
1 Bath
(each unit)

60'-0" x 27'-6"

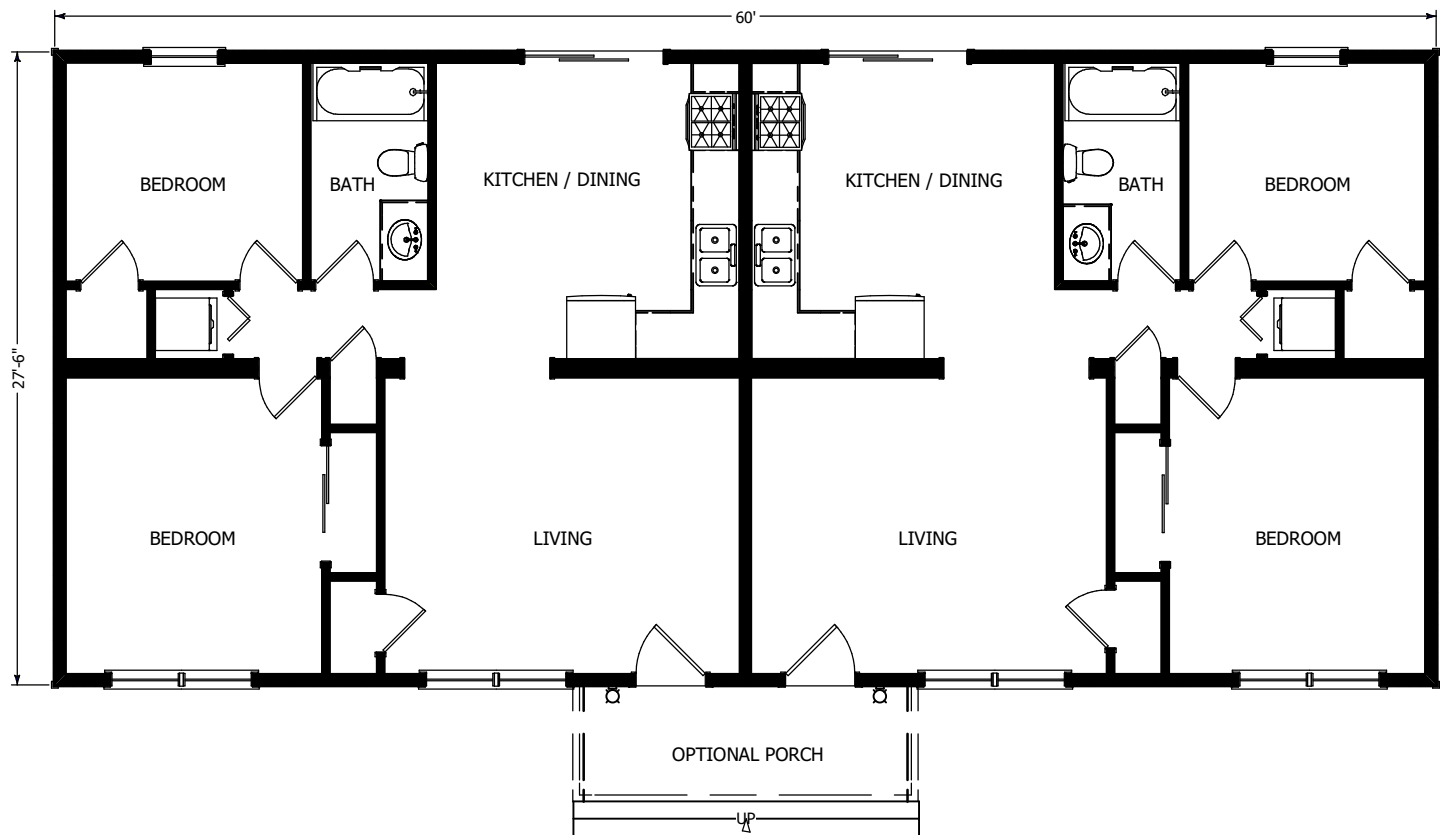
Each Unit 825 s.f.

Total Square Footage
1650 s.f.

(Shown with optional
front porch)

The Amesbury is a single-story multi-family plan. It offers two bedrooms and one bathroom per unit.

(Shown with optional front porch)



1st Floor



560 Turnpike Street
Canton, MA 02021

Phone: 781-828-2100

Fax: 781-828-1050

Info@avalonbuildingsystems.com
www.avalonbuildingsystems.com