

The Webster

The Avalon Collection

Engineered homes built magnificently, promptly, affordably.

Single Story Plan

3 Bedrooms/ 2 Baths

51'-3" x 48'-0"

Total Living Area
1,590 s.f.

Including 2 Car Garage
493 s.f.

Total Square Footage
2,083 s.f.

The Webster is an attractive three bedroom, two bathroom single story home. The plan offers a large optional wrap-around porch, as well as a great open floor plan with a centrally located kitchen.



560 Turnpike Street
Canton, MA 02021
Phone: 781-828-2100
Fax: 781-828-1050

Info@avalonbuildingsystems.com
www.avalonbuildingsystems.com

The Webster

The Avalon Collection

Engineered homes built magnificently, promptly, affordably.

Single Story Plan

3 Bedrooms/ 2 Baths

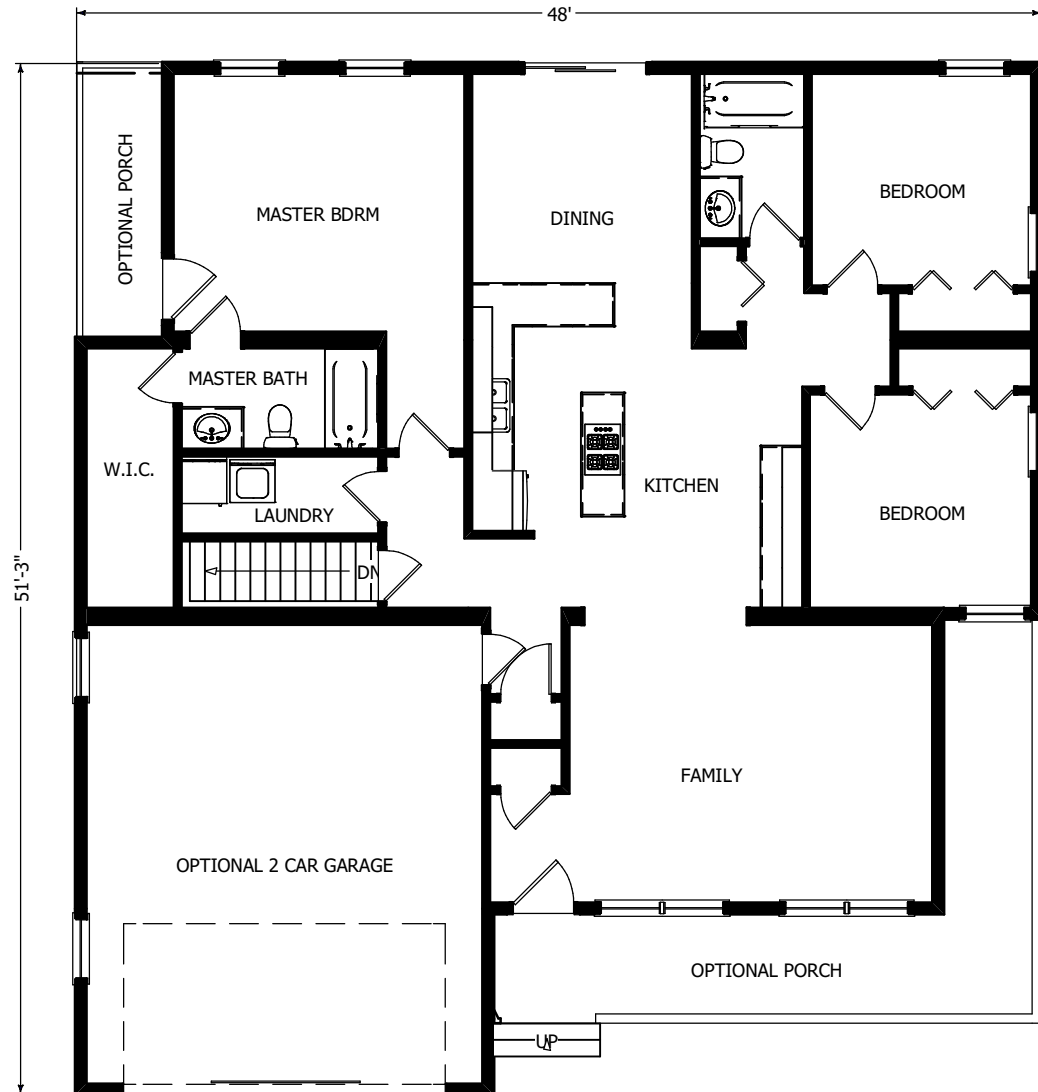
51'-3" x 48'-0"

Total Living Area
1,590 s.f.

Including 2 Car Garage
493 s.f.

Total Square Footage
2,083 s.f.

The Webster is an attractive three bedroom, two bathroom single story home. The plan offers a large optional wrap-around porch, as well as a great open floor plan with a centrally located kitchen.



560 Turnpike Street
Canton, MA 02021
Phone: 781-828-2100
Fax: 781-828-1050

Info@avalonbuildingsystems.com
www.avalonbuildingsystems.com