

The Salem

The Avalon Collection

Engineered homes built magnificently, promptly, affordably.

Two Story Plan

3 Bedrooms /
2.5 Baths

43'-5" x 27'-6"

1st Floor 1076 s.f.

2nd Floor 1076 s.f.

Total Living Area
2152 s.f.

The Salem is an attractive two story plan which offers three bedrooms two and a half bathrooms and a large family room for an open space plan. The plan features an octagonal bump out in both the living room and the master bedroom.



560 Turnpike Street
Canton, MA 02021

Phone: 781-828-2100

Fax: 781-828-1050

Info@avalonbuildingsystems.com
www.avalonbuildingsystems.com

The Salem

The Avalon Collection

Engineered homes built magnificently, promptly, affordably.

Two Story Plan

3 Bedrooms /
2.5 Baths

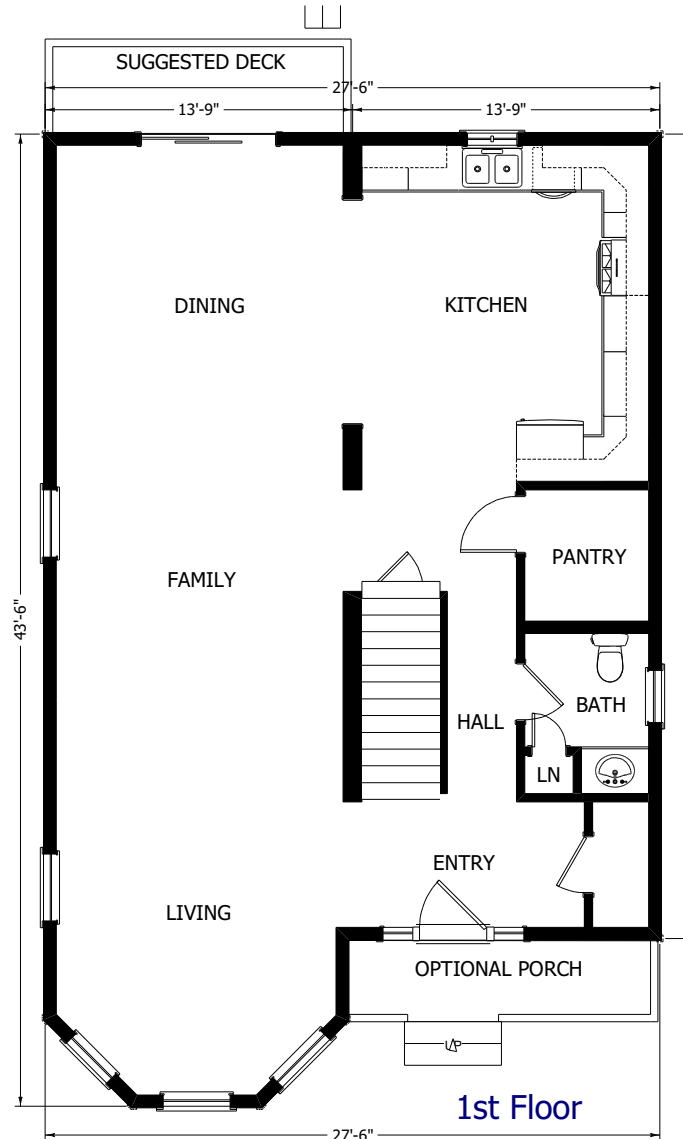
43'-5" x 27'-6"

1st Floor 1076 s.f.

2nd Floor 1076 s.f.

Total Living Area
2152 s.f.

The Salem is an attractive two story plan which offers three bedrooms two and a half bathrooms and a large family room for an open space plan. The plan features an octagonal bump out in both the living room and the master bedroom.



560 Turnpike Street
Canton, MA 02021

Phone: 781-828-2100

Fax: 781-828-1050

Info@avalonbuildingsystems.com
www.avalonbuildingsystems.com

The Salem

The Avalon Collection

Engineered homes built magnificently, promptly, affordably.

Two Story Plan

3 Bedrooms /
2.5 Baths

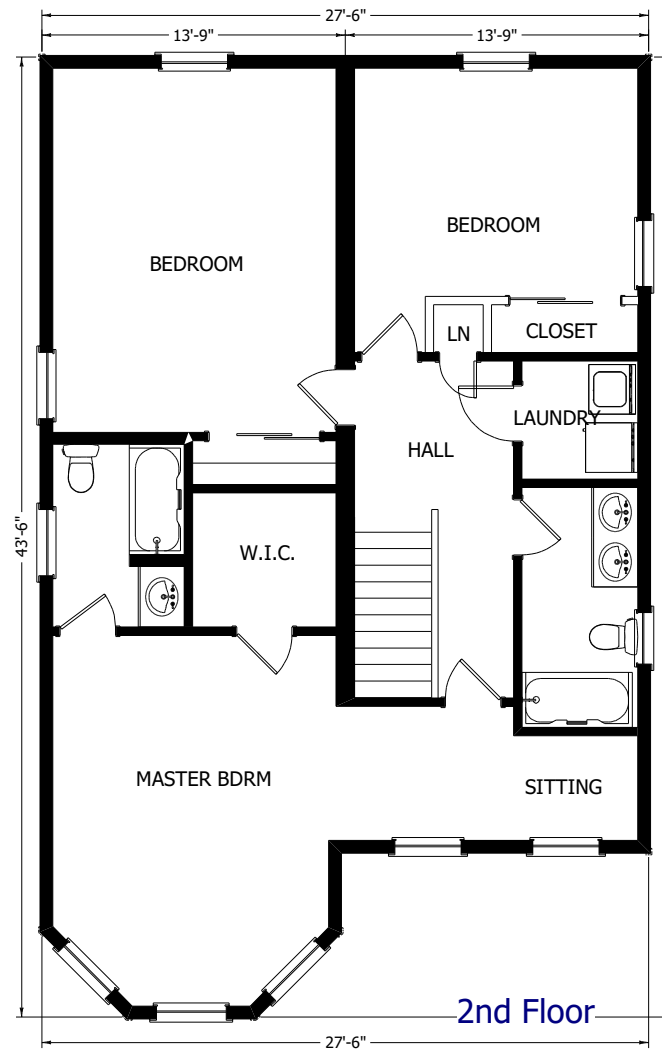
43'-5" x 27'-6"

1st Floor 1076 s.f.

2nd Floor 1076 s.f.

Total Living Area
2152 s.f.

The Salem is an attractive two story plan which offers three bedrooms two and a half bathrooms and a large family room for an open space plan. The plan features an octagonal bump out in both the living room and the master bedroom.



560 Turnpike Street
Canton, MA 02021

Phone: 781-828-2100

Fax: 781-828-1050

Info@avalonbuildingsystems.com

www.avalonbuildingsystems.com