

The Needham

The Avalon Collection

Engineered homes built magnificently, promptly, affordably.

Two Story Plan

4 Bedrooms
2.5 Baths

54'-0" x 27'-6"

1st Floor 1181 s.f

2nd Floor 1484 s.f.

Total Living Area
2665 s.f.

Two Car Garage
23'-6" x 25'-9"

Optional Space Above
159s.f.

The Needham is a colonial plan which offers four bedrooms, two and half bathrooms, and a large second level laundry room. The plan includes a large open space plan on the first level.

(Bonus area above garage is optional)



560 Turnpike Street
Canton, MA 02021

Phone: 781-828-2100

Fax: 781-828-1050

Info@avalonbuildingsystems.com
www.avalonbuildingsystems.com

The Needham

The Avalon Collection

Engineered homes built magnificently, promptly, affordably.

Two Story Plan

4 Bedrooms
2.5 Baths

54'-0" x 27'-6"

1st Floor 1181 s.f.

2nd Floor 1484 s.f.

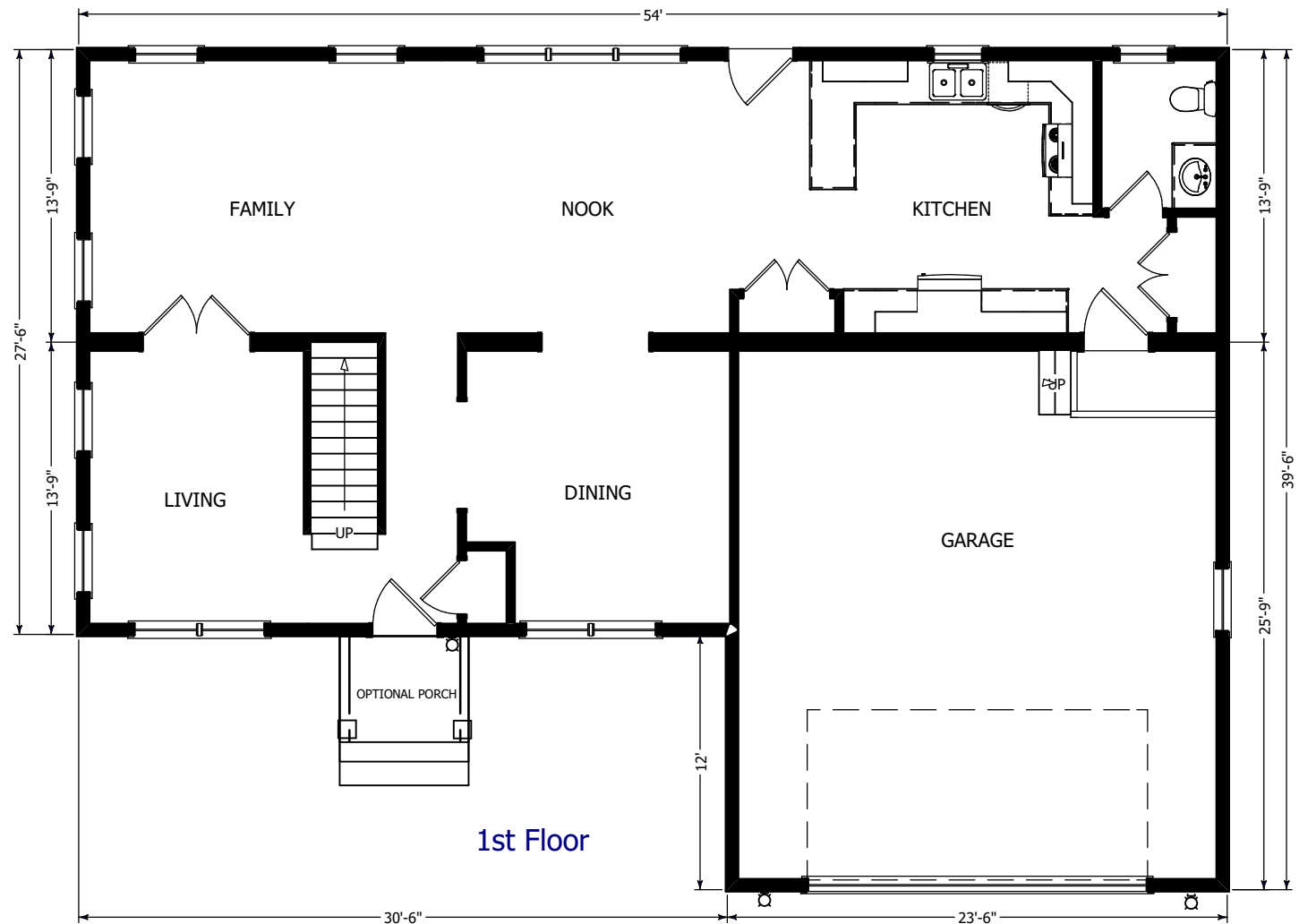
Total Living Area
2665 s.f.

Two Car Garage
23'-6" x 25'-9"

Optional Space Above
159s.f.

The Needham is a colonial plan which offers four bedrooms, two and half bathrooms, and a large second level laundry room. The plan includes a large open space plan on the first level.

(Bonus area above garage is optional)



560 Turnpike Street
Canton, MA 02021

Phone: 781-828-2100

Fax: 781-828-1050

Info@avalonbuildingsystems.com
www.avalonbuildingsystems.com

The Needham

The Avalon Collection

Engineered homes built magnificently, promptly, affordably.

Two Story Plan

4 Bedrooms
2.5 Baths

54'-0" x 27'-6"

1st Floor 1181 s.f.

2nd Floor 1484 s.f.

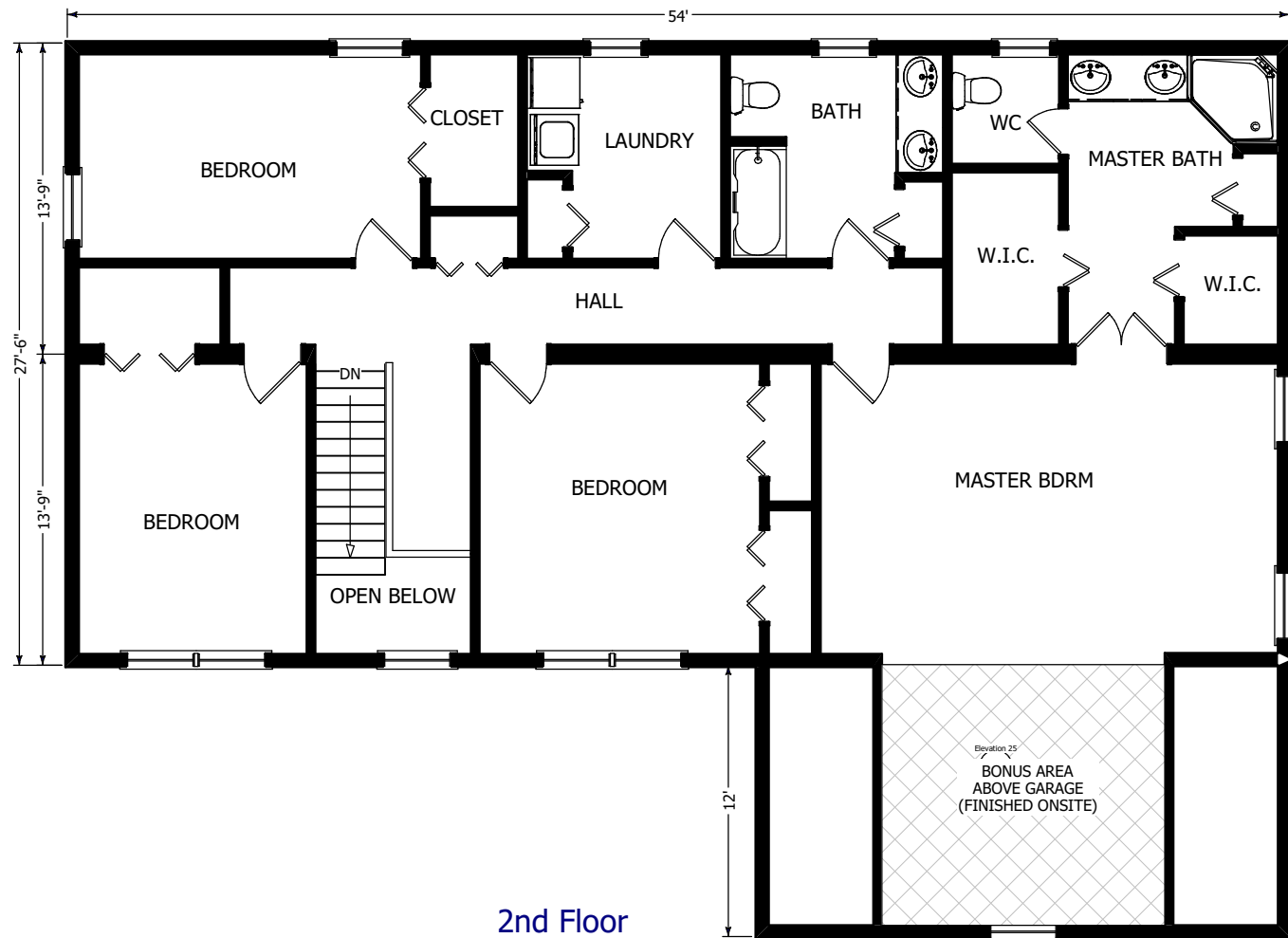
Total Living Area
2665 s.f.

Two Car Garage
23'-6" x 25'-9"

Optional Space Above
159s.f.

The Needham is a colonial plan which offers four bedrooms, two and half bathrooms, and a large second level laundry room. The plan includes a large open space plan on the first level.

(Bonus area above garage is optional)



560 Turnpike Street
Canton, MA 02021
Phone: 781-828-2100
Fax: 781-828-1050

Info@avalonbuildingsystems.com
www.avalonbuildingsystems.com