

The Manchester

The Avalon Collection

Engineered homes built magnificently, promptly, affordably.

Two Story Plan

4 Bedrooms
3.5 Baths

60'-0" x 27'-6"

1st Floor 1619 s.f.

2nd Floor 1619 s.f.

Total Living Area
3238 s.f.

Optional 2 car garage
485 s.f.

The Manchester is a grand four bedroom colonial with a large open space plan. The plan boasts a large family room which flows into the kitchen and breakfast area.

The 2 car garage is optional.



560 Turnpike Street
Canton, MA 02021

Phone: 781-828-2100

Fax: 781-828-1050

Info@avalonbuildingsystems.com
www.avalonbuildingsystems.com

The Manchester

The Avalon Collection

Engineered homes built magnificently, promptly, affordably.

Two Story Plan

4 Bedrooms
3.5 Baths

60'-0" x 27'-6"

1st Floor 1619 s.f.

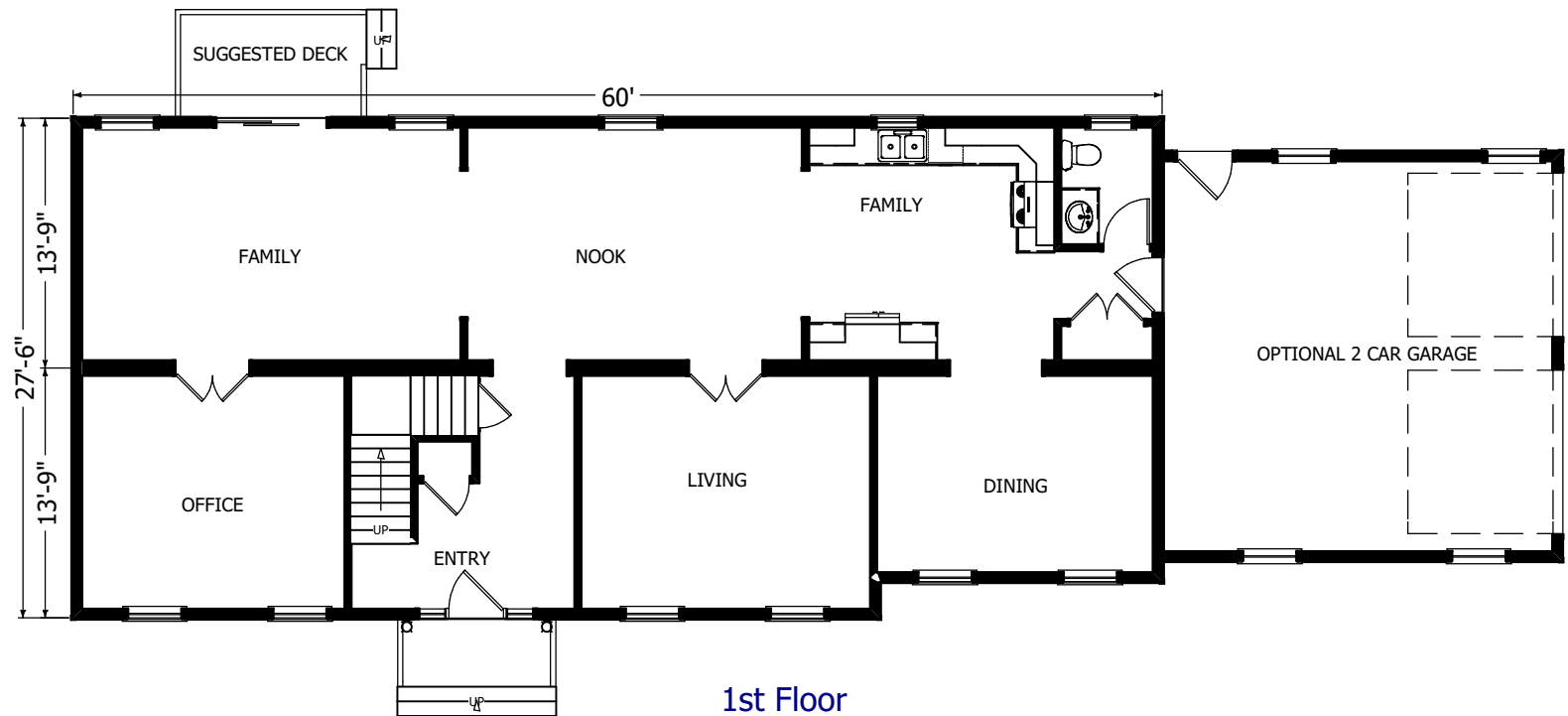
2nd Floor 1619 s.f.

Total Living Area
3238 s.f.

Optional 2 car garage
485 s.f.

The Manchester is a grand four bedroom colonial with a large open space plan. The plan boasts a large family room which flows into the kitchen and breakfast area.

The 2 car garage is optional.



560 Turnpike Street
Canton, MA 02021

Phone: 781-828-2100

Fax: 781-828-1050

Info@avalonbuildingsystems.com
www.avalonbuildingsystems.com

The Manchester

The Avalon Collection

Engineered homes built magnificently, promptly, affordably.

Two Story Plan

4 Bedrooms
3.5 Baths

60'-0" x 27'-6"

1st Floor 1619 s.f.

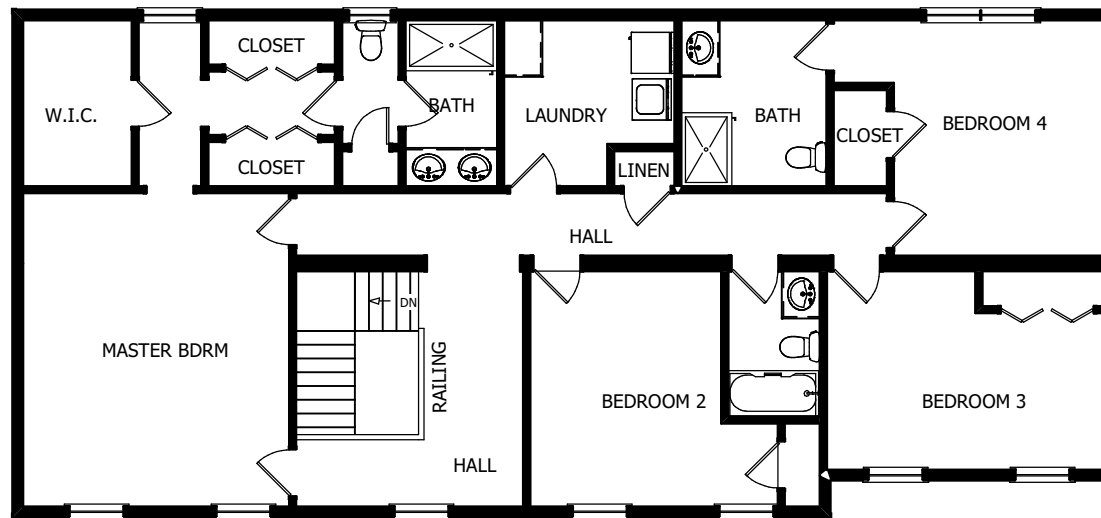
2nd Floor 1619 s.f.

Total Living Area
3238 s.f.

Optional 2 car garage
485 s.f.

The Manchester is a grand four bedroom colonial with a large open space plan. The plan boasts a large family room which flows into the kitchen and breakfast area.

The 2 car garage is optional.



2nd Floor



560 Turnpike Street
Canton, MA 02021

Phone: 781-828-2100

Fax: 781-828-1050

Info@avalonbuildingsystems.com

www.avalonbuildingsystems.com