

## The Ashland-ADA

# The Avalon Collection

*Engineered homes built magnificently, promptly, affordably.*

## Two-Story Plan

4 Bedrooms

3.5 Baths

43'-0" x 29'-6"

1st Floor

1,236 s.f.

2nd Floor

811 s.f.

Total Square Area

2,047 s.f.

The Ashland-ADA accessible plan is a charming colonial plan with a large living room and master bedroom suite on the first floor that will accommodate ADA persons, with three bedrooms on the second level. The plan also offers three and a half bathrooms.



560 Turnpike Street

Canton, MA 02021

Phone: 781-828-2100

Fax: 781-828-1050

[Info@avalonbuildingsystems.com](mailto:Info@avalonbuildingsystems.com)

[www.avalonbuildingsystems.com](http://www.avalonbuildingsystems.com)

# The Ashland-ADA

# The Avalon Collection

Engineered homes built magnificently, promptly, affordably.

## Two-Story Plan

4 Bedrooms

3.5 Baths

43'-0" x 29'-6"

1st Floor

1,236 s.f.

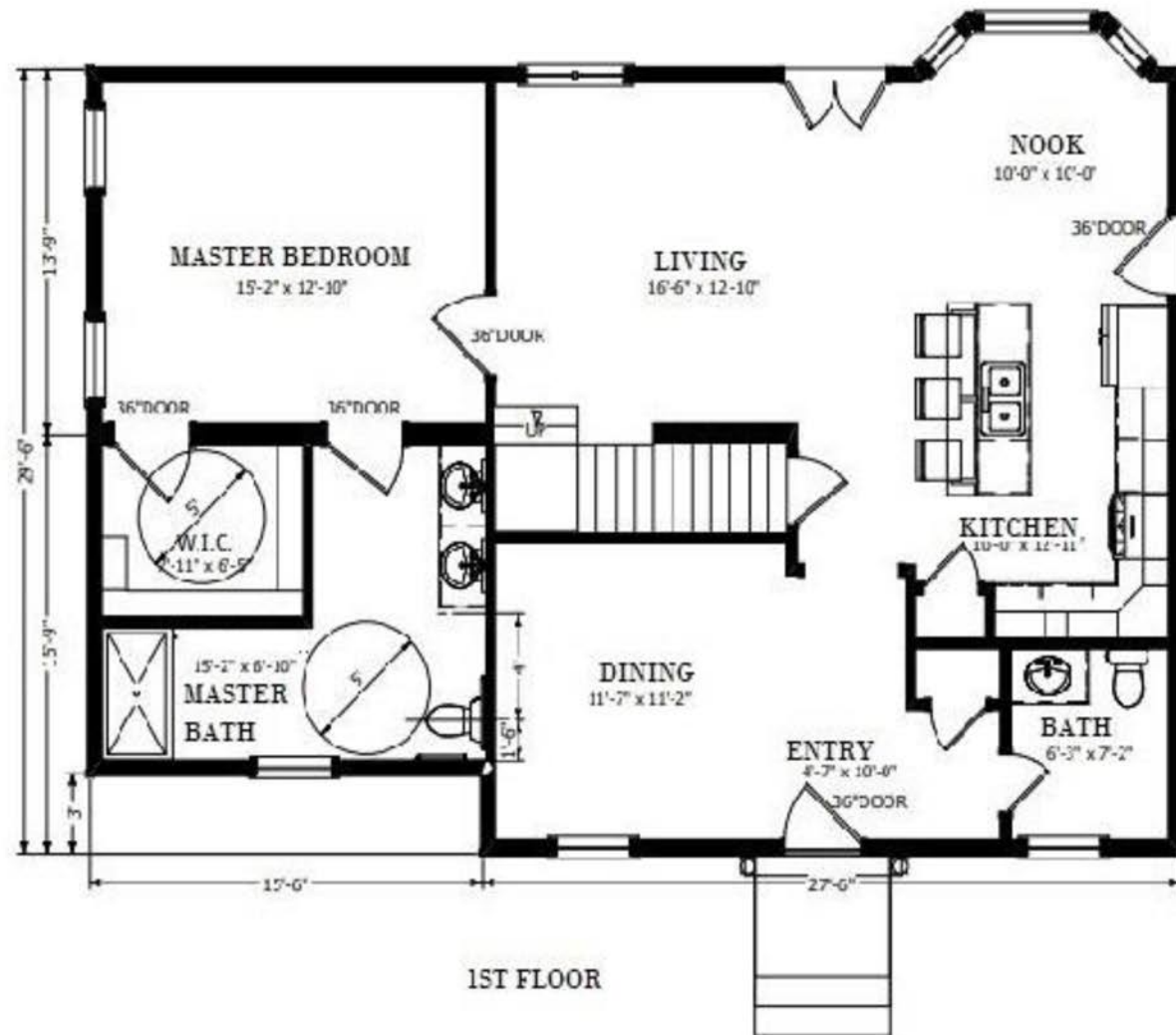
2nd Floor

811 s.f.

Total Square Area

2,047 s.f.

The Ashland-ADA accessible plan is a charming colonial plan with a large living room and master bedroom suite on the first floor that will accommodate ADA persons, with three bedrooms on the second level. The plan also offers three and a half bathrooms.



560 Turnpike Street

Canton, MA 02021

Phone: 781-828-2100

Fax: 781-828-1050

[Info@avalonbuildingsystems.com](mailto:Info@avalonbuildingsystems.com)

[www.avalonbuildingsystems.com](http://www.avalonbuildingsystems.com)

## Two-Story Plan

4 Bedrooms

3.5 Baths

43'-0" x 29'-6"

1st Floor

1,236 s.f.

2nd Floor

811 s.f.

Total Square Area

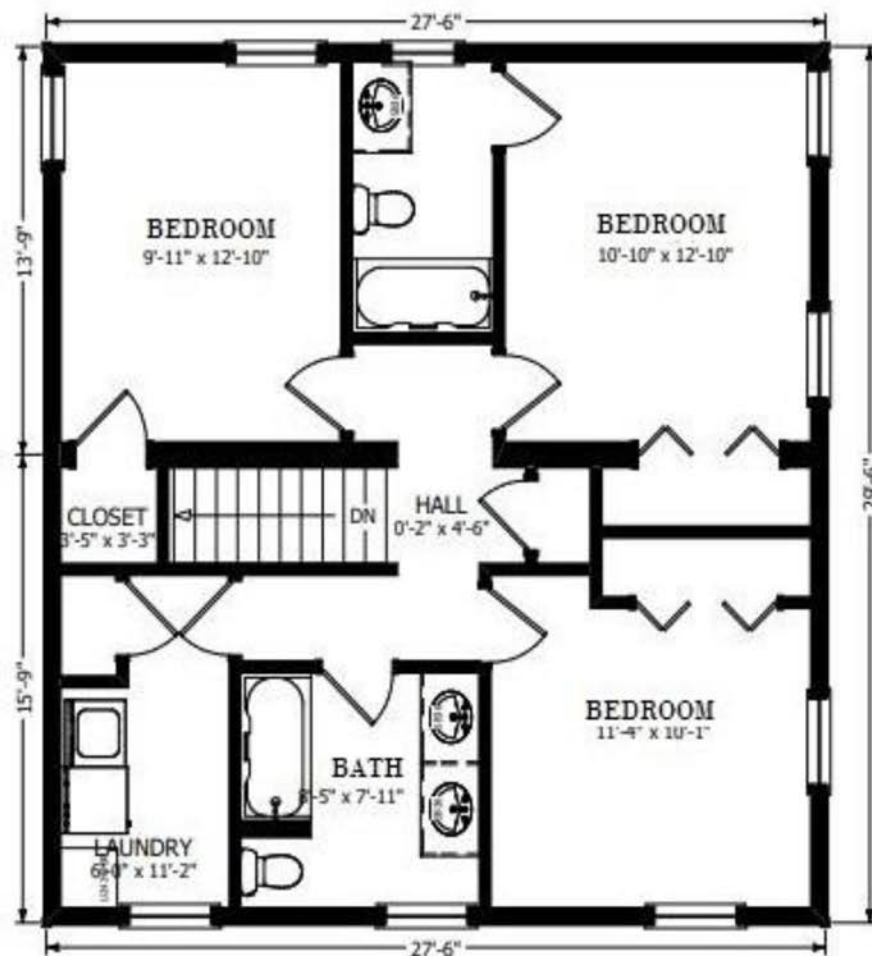
2,047 s.f.



560 Turnpike Street  
Canton, MA 02021  
Phone: 781-828-2100  
Fax: 781-828-1050

Info@avalonbuildingsystems.com  
www.avalonbuildingsystems.com

The Ashland-ADA accessible plan is a charming colonial plan with a large living room and master bedroom suite on the first floor that will accommodate ADA persons, with three bedrooms on the second level. The plan also offers three and a half bathrooms.



2nd Floor