

# The Yarborough

# The Avalon Collection

*Engineered homes built magnificently, promptly, affordably.*

## Accessory Dwelling Unit

2 Bedrooms / 2 Baths

15'-9" X 60'-0"

Total Square Footage: 945 s.f.

Optional Porch

The Yarborough is a spacious and attractive home with an open living / dining/ kitchen area. This home would be great as an additional dwelling unit or on its own lot.



560 Turnpike Street  
Canton, MA 02021  
Phone: 781-828-2100  
Fax: 781-828-1050

Info@avalonbuildingsystems.com  
www.avalonbuildingsystems.com

# The Yarborough

# The Avalon Collection

Engineered homes built magnificently, promptly, affordably.

Accessory Dwelling Unit

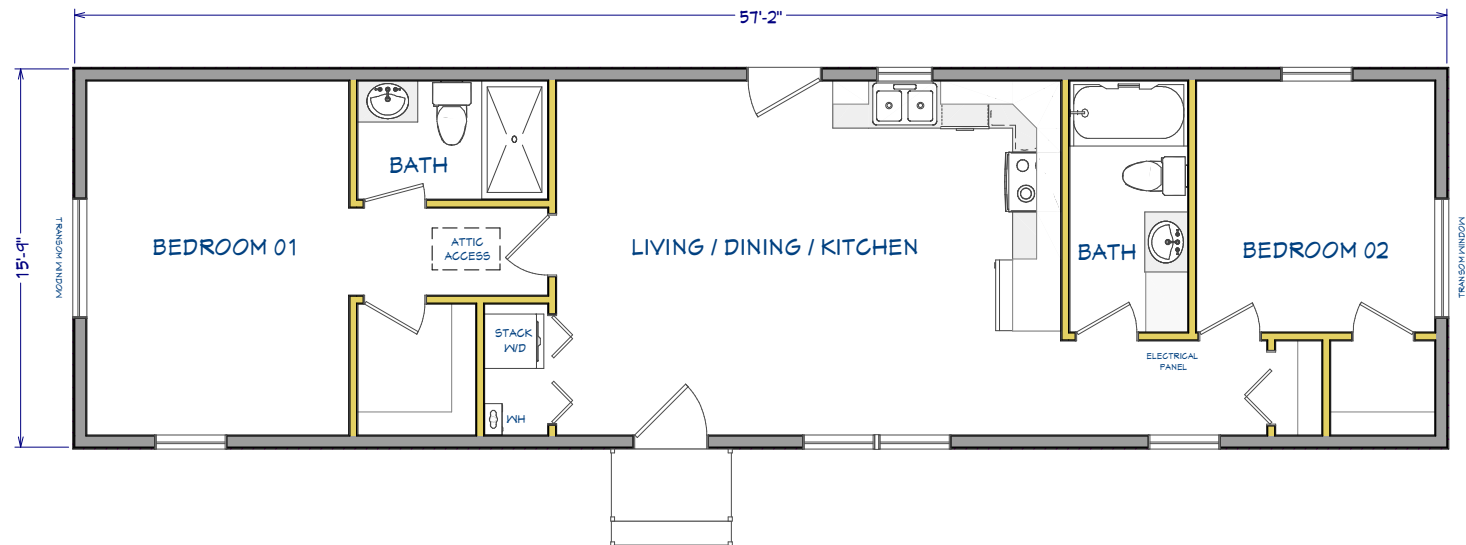
The Yarborough is a spacious and attractive home with an open living / dining / kitchen area. This home would be great as an additional dwelling unit or on its own lot.

2 Bedrooms / 2 Baths

15'-9" X 57'-2"

Total Square Footage: 900 s.f.

Optional Porch



560 Turnpike Street  
Canton, MA 02021  
Phone: 781-828-2100  
Fax: 781-828-1050

Info@avalonbuildingsystems.com  
www.avalonbuildingsystems.com