

The Westerly

The Avalon Collection

Engineered homes built magnificently, promptly, affordably.

Accessory Dwelling Unit

2 Bedroom / 1 Bath

13'-9" X 54'-0"

Total Square Footage: 743 s.f.

Optional Porch

The Westerly is an efficient 2-bedroom, 1-bathroom home designed for open living. With bedrooms on opposite sides, it offers a central living area for maximum comfort. An optional front porch adds to its appeal.



560 Turnpike Street
Canton, MA 02021
Phone: 781-828-2100
Fax: 781-828-1050

Info@avalonbuildingsystems.com
www.avalonbuildingsystems.com

The Westerly

The Avalon Collection

Engineered homes built magnificently, promptly, affordably.

Accessory Dwelling Unit

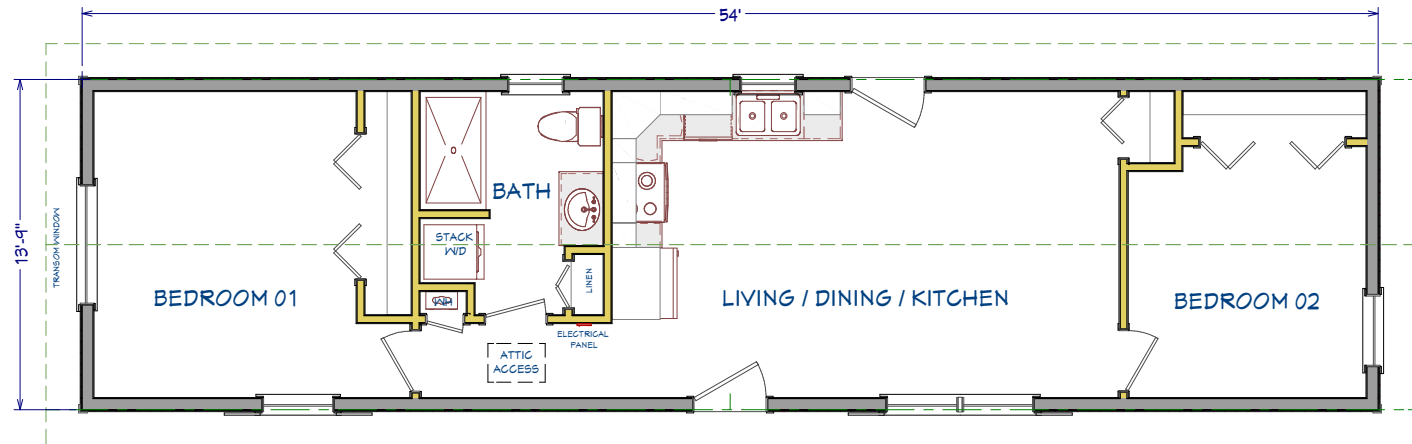
2 Bedroom / 1 Bath

13'-9" X 54'-0"

Total Square Footage: 743 s.f.

Optional Porch

The Westerly is an efficient 2-bedroom, 1-bathroom home designed for open living. With bedrooms on opposite sides, it offers a central living area for maximum comfort. An optional front porch adds to its appeal.



560 Turnpike Street
Canton, MA 02021
Phone: 781-828-2100
Fax: 781-828-1050

Info@avalonbuildingsystems.com
www.avalonbuildingsystems.com