

The Newton

The Avalon Collection

Engineered homes built magnificently, promptly, affordably.

Contemporary Plan

The Newton is a lovely and spacious contemporary home with a large living area. The plan also features four bedrooms and three and half bathrooms.

4 Bedrooms
3 1/2 Baths

64'-0" x 42'-0"

1st Floor 2115 s.f.

2nd Floor 2115 s.f.

Garage 576 s.f.

Total Finished Area
4806 s.f.



560 Turnpike Street
Canton, MA 02021
Phone: 781-828-2100
Fax: 781-828-1050

Info@avalonbuildingsystems.com
www.avalonbuildingsystems.com

The Newton

The Avalon Collection

Engineered homes built magnificently, promptly, affordably.

Contemporary Plan

4 Bedrooms
3 1/2 Baths

64'-0" x 42'-0"

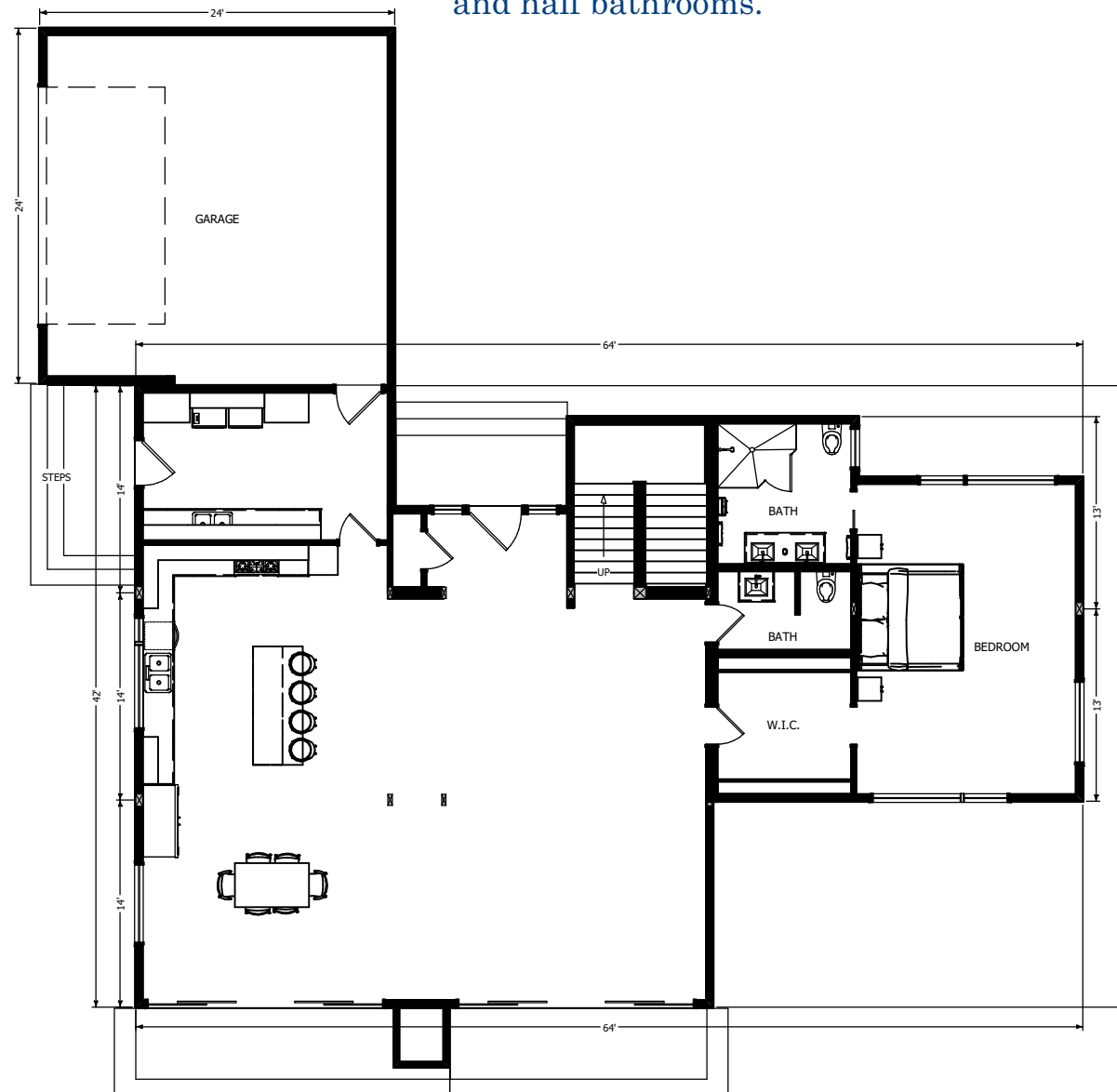
1st Floor 2115 s.f.

2nd Floor 2115 s.f.

Garage 576 s.f.

Total Finished Area
4806 s.f.

The Newton is a lovely and spacious contemporary home with a large living area. The plan also features four bedrooms and three and half bathrooms.



1st Floor



560 Turnpike Street
Canton, MA 02021
Phone: 781-828-2100
Fax: 781-828-1050

Info@avalonbuildingsystems.com
www.avalonbuildingsystems.com

The Newton

The Avalon Collection

Engineered homes built magnificently, promptly, affordably.

Contemporary Plan

The Newton is a lovely and spacious contemporary home with a large living area. The plan also features four bedrooms and three and half bathrooms.

4 Bedrooms
3 1/2 Baths

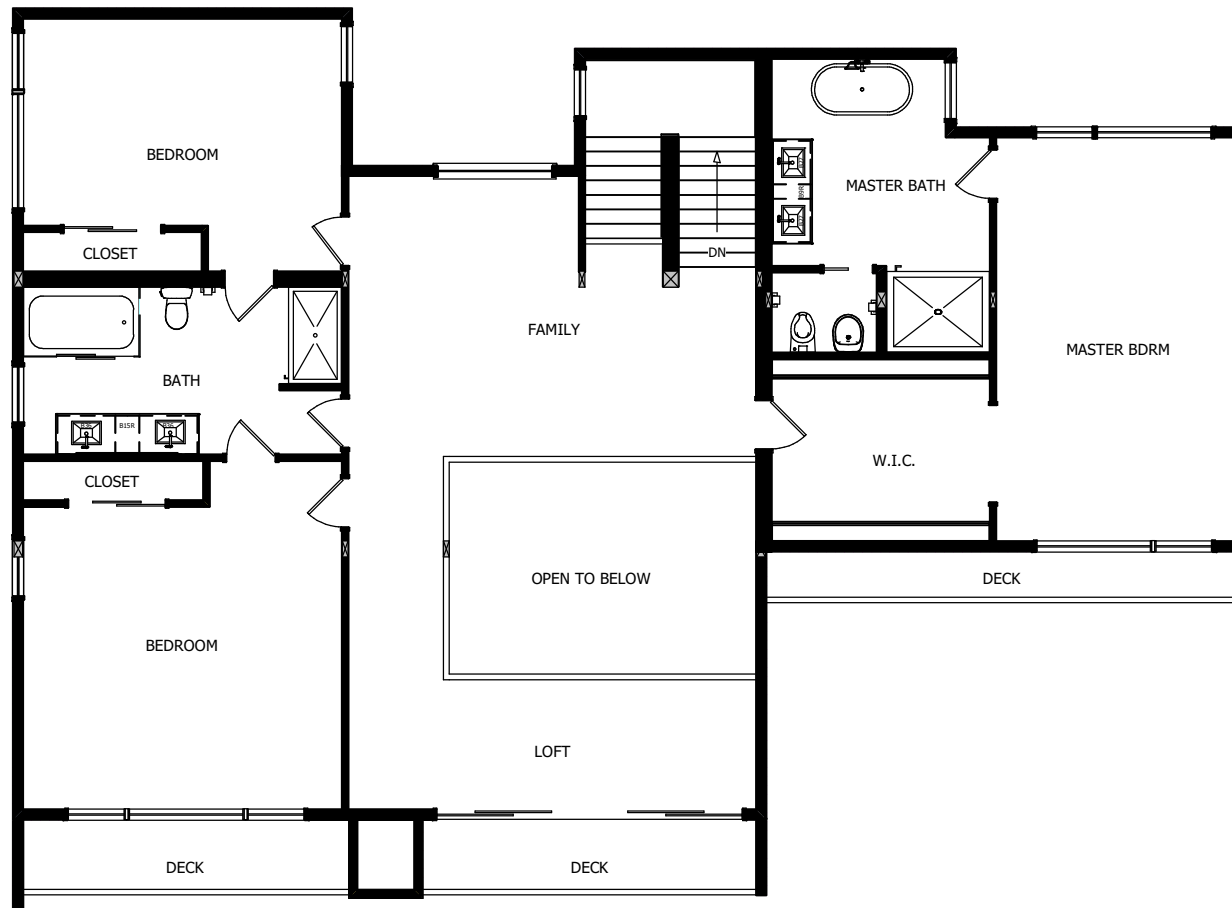
64'-0" x 42'-0"

1st Floor 2115 s.f.

2nd Floor 2115 s.f.

Garage 576 s.f.

Total Finished Area
4806 s.f.



2nd Floor



560 Turnpike Street
Canton, MA 02021
Phone: 781-828-2100
Fax: 781-828-1050

Info@avalonbuildingsystems.com
www.avalonbuildingsystems.com