

The Milton

The Avalon Collection

Engineered homes built magnificently, promptly, affordably.

Two Story Plan

3 Bedrooms /
2.5 Baths

30'-3" x 27'-6"

1st Floor 832 s.f.

2nd Floor 832 s.f.

Total Living Area
1664 s.f.

(Optional Porch)
27'-6" x 6'-0"

The Milton is a quaint two story home with three bedrooms and two and half bathrooms. This plan offers a large living area and a wide open kitchen with pantry.

(The Porch is optional)



560 Turnpike Street
Canton, MA 02021

Phone: 781-828-2100

Fax: 781-828-1050

Info@avalonbuildingsystems.com
www.avalonbuildingsystems.com

The Milton

The Avalon Collection

Engineered homes built magnificently, promptly, affordably.

Two Story Plan

3 Bedrooms /
2.5 Baths

30'-3" x 27'-6"

1st Floor 832 s.f.

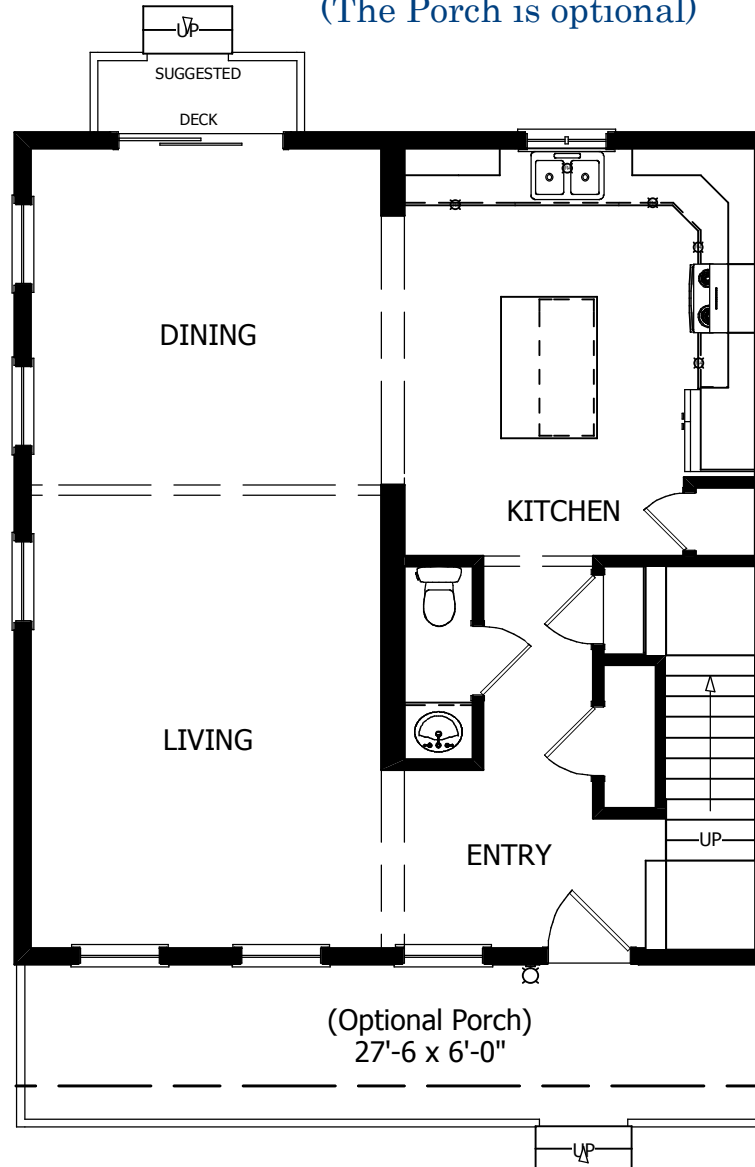
2nd Floor 832 s.f.

Total Living Area
1664 s.f.

(Optional Porch)
27'-6" x 6'-0"

The Milton is a quaint two story home with three bedrooms and two and half bathrooms. This plan offers a large living area and a wide open kitchen with pantry.

(The Porch is optional)



1st Floor



560 Turnpike Street
Canton, MA 02021

Phone: 781-828-2100

Fax: 781-828-1050

Info@avalonbuildingsystems.com
www.avalonbuildingsystems.com

The Milton

The Avalon Collection

Engineered homes built magnificently, promptly, affordably.

Two Story Plan

3 Bedrooms /
2.5 Baths

30'-3" x 27'-6"

1st Floor 832 s.f.

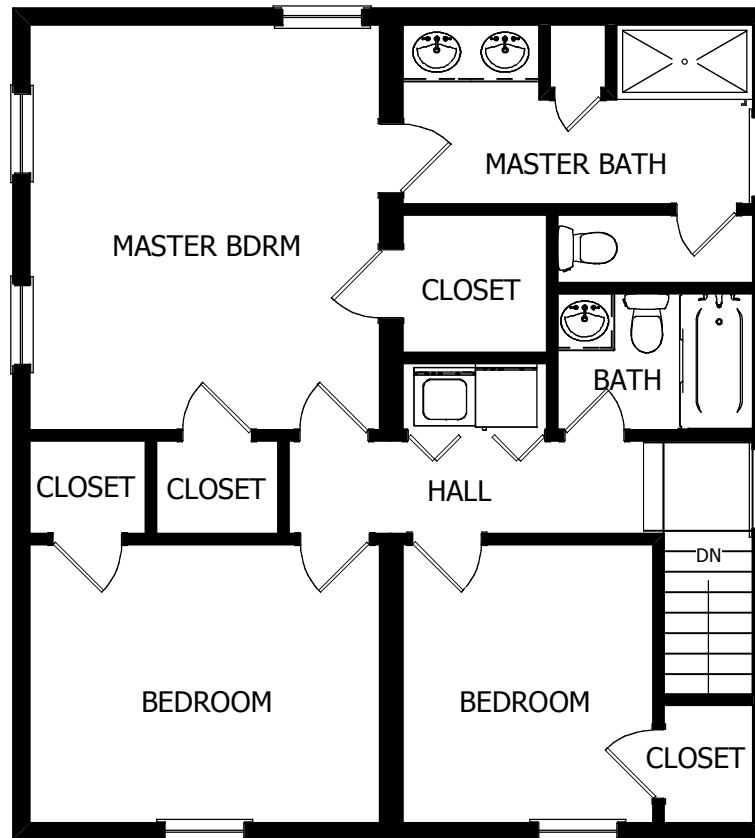
2nd Floor 832 s.f.

Total Living Area
1664 s.f.

(Optional Porch)
27'-6 x 6'-0"

The Milton is a quaint two story home with three bedrooms and two and half bathrooms. This plan offers a large living area and a wide open kitchen with pantry.

(The Porch is optional)



2nd Floor



560 Turnpike Street
Canton, MA 02021

Phone: 781-828-2100

Fax: 781-828-1050

Info@avalonbuildingsystems.com
www.avalonbuildingsystems.com