

The Mashpee

The Avalon Collection

Engineered homes built magnificently, promptly, affordably.

Cape Style Plan

3 Bedrooms
2 Baths

48'-0" x 27'-6"

First Floor Square
Footage: 1286
Second Floor: 735s.f.

(To be finished on site)

Total Square Footage:
2021s.f.

The Cape style Mashpee is a traditional cape plan which offers a large living room area as well as a den. The plan also offers a first floor bedroom and the suggested second level offers two additional bedrooms and a bathroom.



560 Turnpike Street
Canton, MA 02021
Phone: 781-828-2100
Fax: 781-828-1050

Info@avalonbuildingsystems.com
www.avalonbuildingsystems.com

The Mashpee

The Avalon Collection

Engineered homes built magnificently, promptly, affordably.

Cape Style Plan

3 Bedrooms
2 Baths

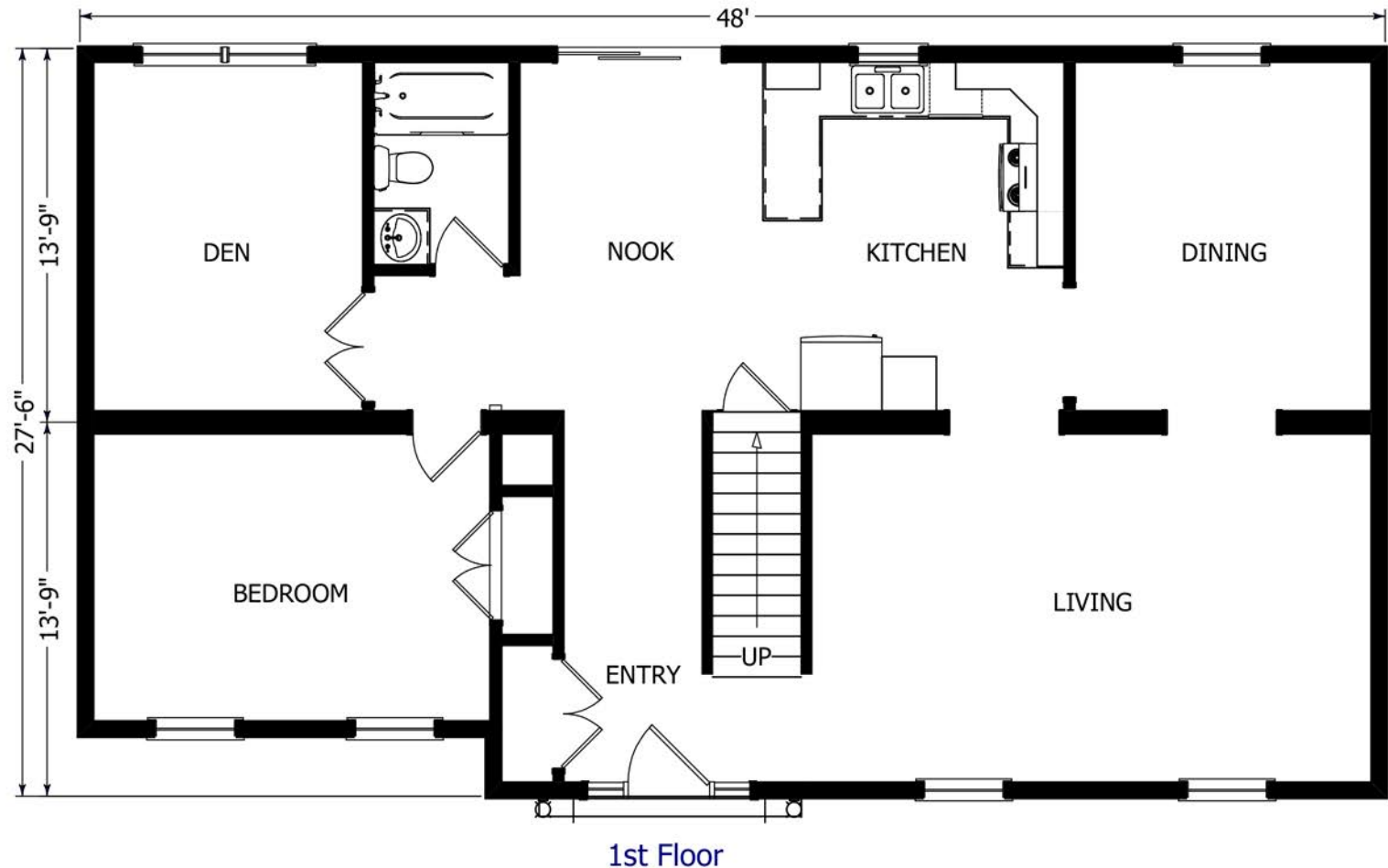
48'-0" x 27'-6"

First Floor Square
Footage: 1286
Second Floor: 735s.f.

(To be finished on site)

Total Square Footage:
2021s.f.

The Cape style Mashpee is a traditional cape plan which offers a large living room area as well as a den. The plan also offers a first floor bedroom and the suggested second level offers two additional bedrooms and a bathroom.



560 Turnpike Street
Canton, MA 02021
Phone: 781-828-2100
Fax: 781-828-1050

Info@avalonbuildingsystems.com
www.avalonbuildingsystems.com

The Mashpee

The Avalon Collection

Engineered homes built magnificently, promptly, affordably.

Cape Style Plan

3 Bedrooms
2 Baths

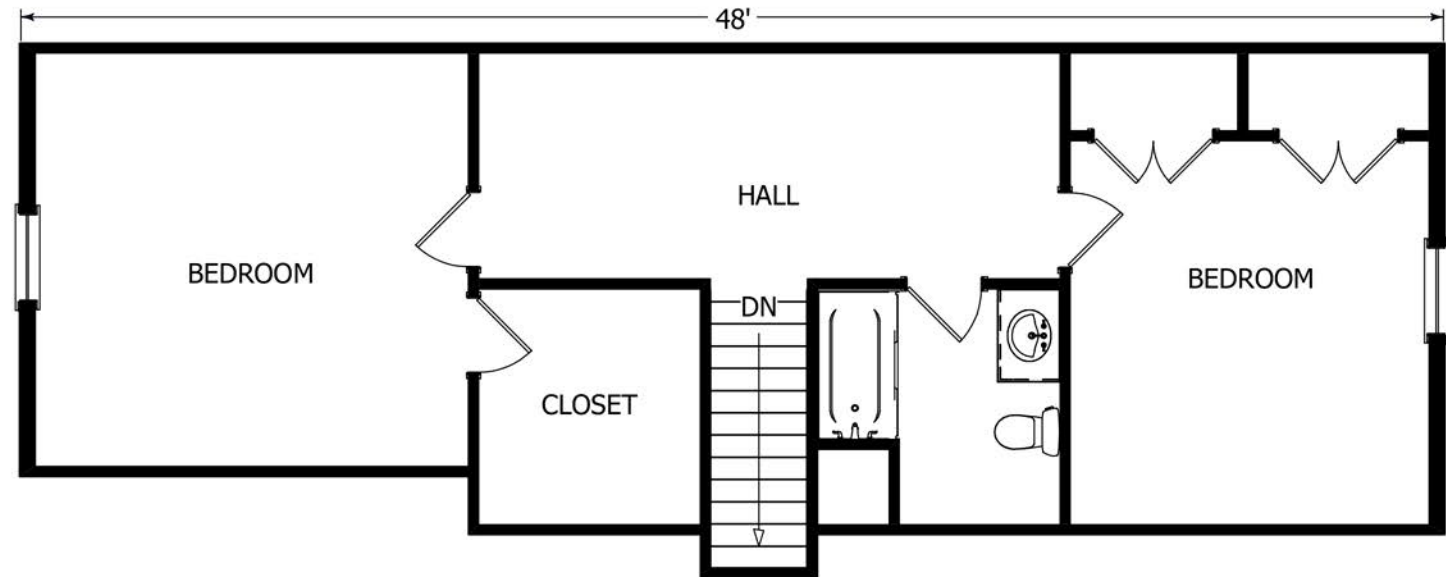
48'-0" x 27'-6"

First Floor Square
Footage: 1286
Second Floor: 735s.f.

(To be finished on site)

Total Square Footage:
2021s.f.

The Cape style Mashpee is a traditional cape plan which offers a large living room area as well as a den. The plan also offers a first floor bedroom and the suggested second level offers two additional bedrooms and a bathroom.



2nd Floor

(To be finished on site)



560 Turnpike Street
Canton, MA 02021
Phone: 781-828-2100
Fax: 781-828-1050

Info@avalonbuildingsystems.com
www.avalonbuildingsystems.com