

The Kingston

The Avalon Collection

Engineered homes built magnificently, promptly, affordably.

Single Story Plan

3 Bedrooms
2 Baths

67'-6" x 33'-0"

Total Living Area
1,653 s.f.

Optional 2 Car Garage
466 s.f.

The Kingston is a spacious ranch which offers large windows, appealing character and an open layout. The plan features a large great room with vaulted ceilings in the center of the home with an adjoining kitchen and dining area.



560 Turnpike Street
Canton, MA 02021

Phone: 781-828-2100

Fax: 781-828-1050

Info@avalonbuildingsystems.com

www.avalonbuildingsystems.com

The Kingston

The Avalon Collection

Engineered homes built magnificently, promptly, affordably.

Single Story Plan

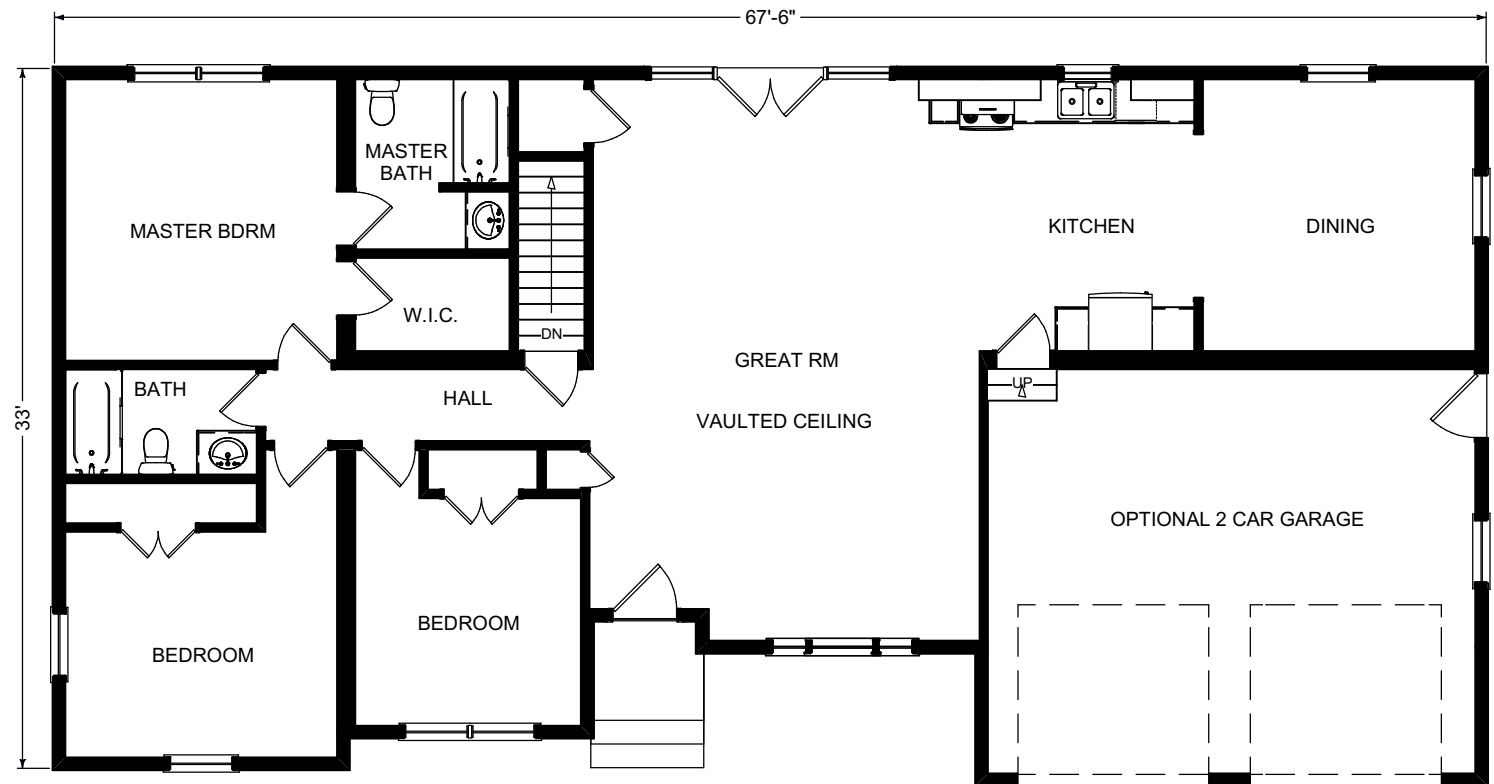
3 Bedrooms
2 Baths

67'-6" x 33'-0"

Total Living Area
1,653 s.f.

Optional 2 Car Garage
466 s.f.

The Kingston is a spacious ranch which offers large windows, appealing character and an open layout. The plan features a large great room with vaulted ceilings in the center of the home with an adjoining kitchen and dining area.



1st Floor



560 Turnpike Street
Canton, MA 02021
Phone: 781-828-2100
Fax: 781-828-1050

Info@avalonbuildingsystems.com
www.avalonbuildingsystems.com