

The Huntington

The Avalon Collection

Engineered homes built magnificently, promptly, affordably.

Two Story Plan

4 Bedrooms

3 1/2 Baths

44'-0" x 27'-6"

1st Floor 1282 s.f.

2nd Floor 1250 s.f.

Total Living Area
2532 s.f.

Optional 2 car garage
650 s.f.

The Huntington plan is a large open space plan colonial. The plan offers four bedrooms on the second floor, each with access to a bathroom. The plan also includes a large dining room, family room and an optional 2 car garage



560 Turnpike Street
Canton, MA 02021

Phone: 781-828-2100

Fax: 781-828-1050

Info@avalonbuildingsystems.com

www.avalonbuildingsystems.com

The Huntington

The Avalon Collection

Engineered homes built magnificently, promptly, affordably.

Two Story Plan

4 Bedrooms

3 1/2 Baths

44'-0" x 27'-6"

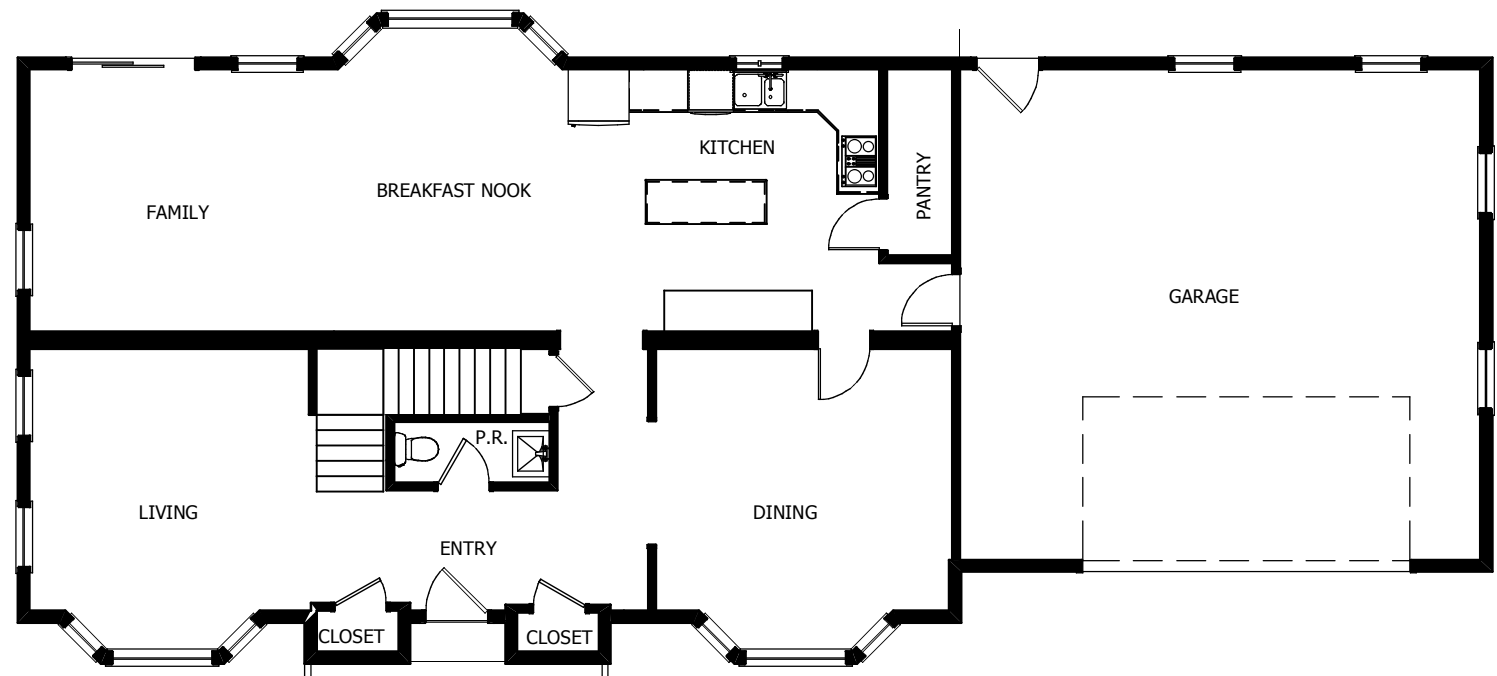
1st Floor 1282 s.f.

2nd Floor 1250 s.f.

Total Living Area
2532 s.f.

Optional 2 car garage
650 s.f.

The Huntington plan is a large open space plan colonial. The plan offers four bedrooms on the second floor, each with access to a bathroom. The plan also includes a large dining room, family room and an optional 2 car garage



1st Floor

Shown with
Optional 2 Car Garage.



560 Turnpike Street
Canton, MA 02021

Phone: 781-828-2100

Fax: 781-828-1050

Info@avalonbuildingsystems.com
www.avalonbuildingsystems.com

The Huntington

The Avalon Collection

Engineered homes built magnificently, promptly, affordably.

Two Story Plan

4 Bedrooms

3 1/2 Baths

44'-0" x 27'-6"

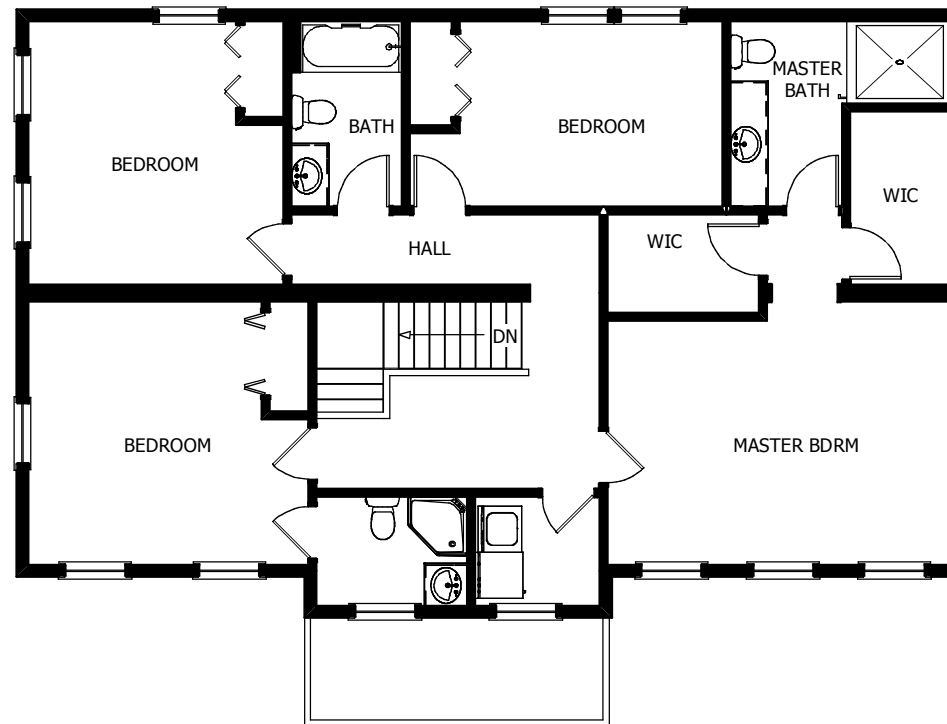
1st Floor 1282 s.f.

2nd Floor 1250 s.f.

Total Living Area
2532 s.f.

Optional 2 car garage
650 s.f.

The Huntington plan is a large open space plan colonial. The plan offers four bedrooms on the second floor, each with access to a bathroom. The plan also includes a large dining room, family room and an optional 2 car garage



2nd Floor



560 Turnpike Street
Canton, MA 02021

Phone: 781-828-2100

Fax: 781-828-1050

Info@avalonbuildingsystems.com

www.avalonbuildingsystems.com