

# The Greenwich

# The Avalon Collection

*Engineered homes built magnificently, promptly, affordably.*

## Cape Style Plan

3 Bedrooms  
2 Baths

44'-0" x 27'-6"

First Floor Square  
Footage: 1212s.f.

Second Floor: 602s.f.  
(To be finished on site)

Total Square Footage:  
1814s.f.

Optional Family Room:  
236s.f.

The Cape Greenwich is a classic cape plan which offers one bedroom on the first level and additional two bedrooms on the suggested second floor plan. The plan also offers an option to add a large family room in the rear of the house.



560 Turnpike Street  
Canton, MA 02021  
Tel: 781-828-2100  
Fax: 781-828-1050

Info@avalonbuildingsystems.com  
www.avalonbuildingsystems.com

# The Greenwich

# The Avalon Collection

Engineered homes built magnificently, promptly, affordably.

## Cape Style Plan

3 Bedrooms  
2 Baths

44'-0" x 27'-6"

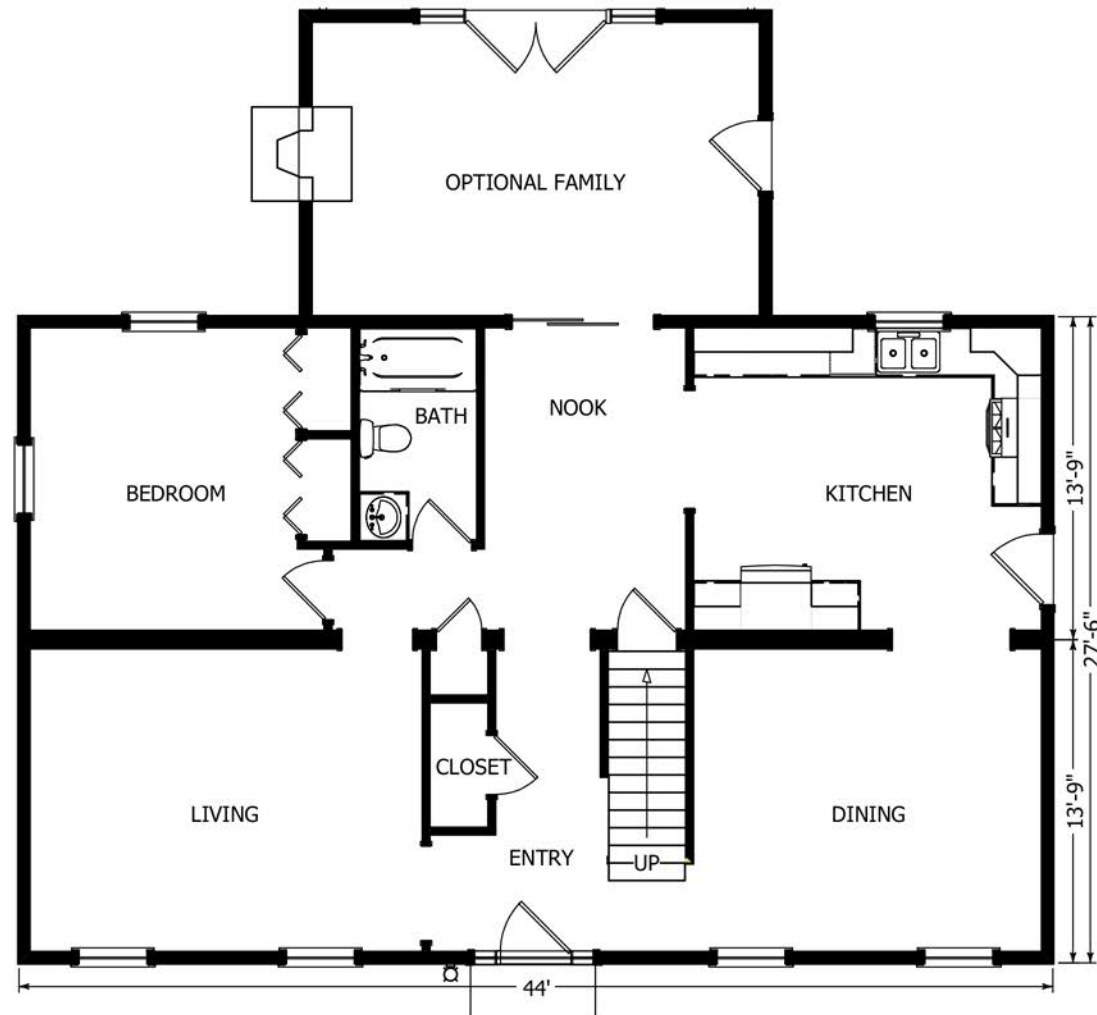
First Floor Square  
Footage: 1212s.f.

Second Floor: 602s.f.  
(To be finished on site)

Total Square Footage:  
1814s.f.

Optional Family Room:  
236s.f.

The Cape Greenwich is a classic cape plan which offers one bedroom on the first level and additional two bedrooms on the suggested second floor plan. The plan also offers an option to add a large family room in the rear of the house.



1st Floor



560 Turnpike Street  
Canton, MA 02021  
Tel: 781-828-2100  
Fax: 781-828-1050

Info@avalonbuildingsystems.com  
www.avalonbuildingsystems.com

# The Greenwich

# The Avalon Collection

*Engineered homes built magnificently, promptly, affordably.*

## Cape Style Plan

3 Bedrooms  
2 Baths

44'-0" x 27'-6"

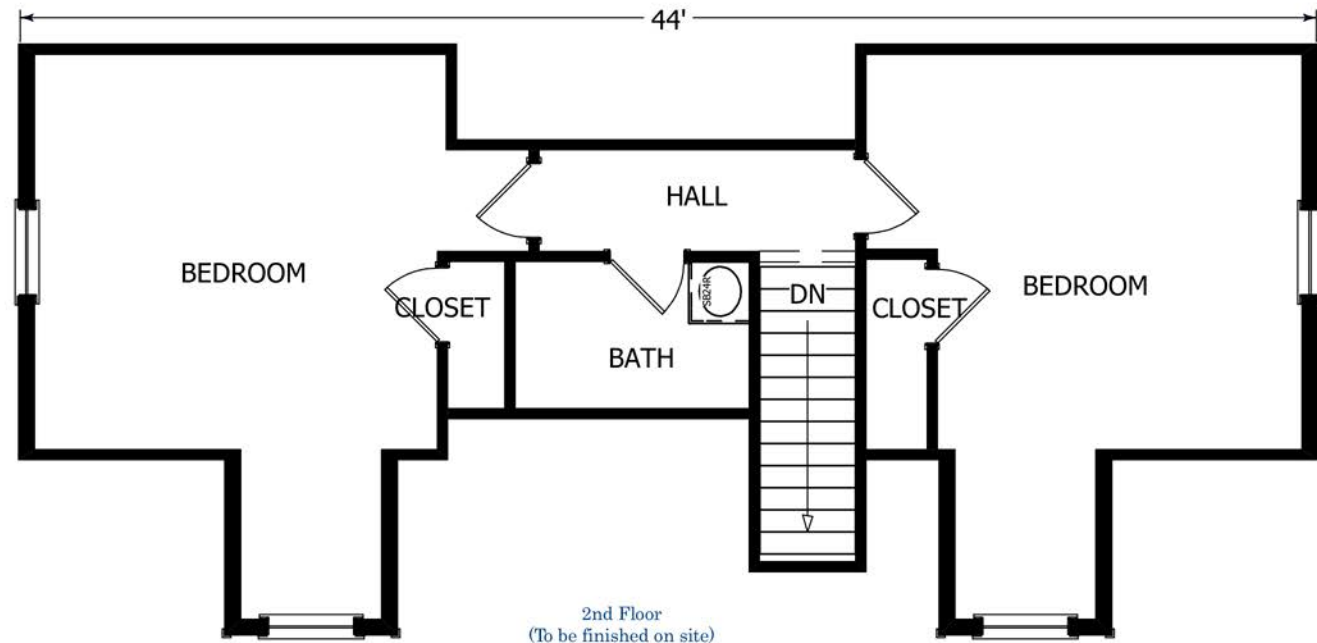
First Floor Square  
Footage: 1212s.f.

Second Floor: 602s.f.  
(To be finished on site)

Total Square Footage:  
1814s.f.

Optional Family Room:  
236s.f.

The Cape Greenwich is a classic cape plan which offers one bedroom on the first level and additional two bedrooms on the suggested second floor plan. The plan also offers an option to add a large family room in the rear of the house.



560 Turnpike Street  
Canton, MA 02021  
Tel: 781-828-2100  
Fax: 781-828-1050

Info@avalonbuildingsystems.com  
www.avalonbuildingsystems.com