

# The Greenfield Cabin

# The Avalon Collection

*Engineered homes built magnificently, promptly, affordably.*

Single Story Plan

2 Bedrooms / 1 Bath

27'-6" x 29'-0"

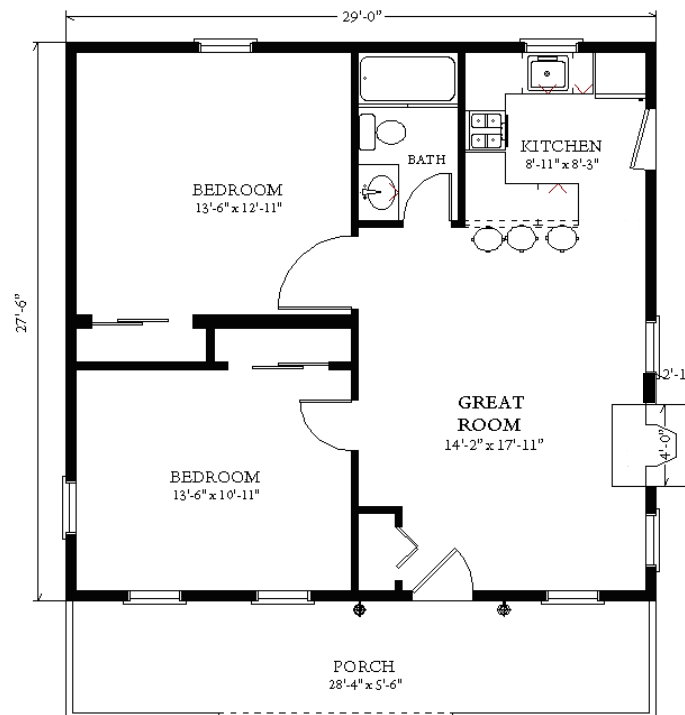
First Floor Square Footage: 800 s. f.

Total Square Footage: 800 square feet

Optional Porch and Fireplace as Shown



The Greenfield Cabin offers two bedrooms and a bathroom. The great room and kitchen area are open with an optional fireplace. The plan also offers a great front porch which adds to the charm of the plan.



3 Porter Street, Suit 201  
Stoughton, Ma 02072  
Phone: 781-344-4875  
Fax: 781-341-8321

Info@avalonbuildingsystems.com  
www.avalonbuildingsystems.com