

The Chilmark

The Avalon Collection

Engineered homes built magnificently, promptly, affordably.

Contemporary Plan

3 Bedrooms
3 1/2 Baths

72'-0" x 29'-6"

1st Floor
1,770 s.f.

2nd Floor
897 s.f.

Total Finished Area
2,667 s.f.



560 Turnpike Street

Canton, MA 02021

Phone: 781-828-2100

Fax: 781-828-1050

Info@avalonbuildingsystems.com

www.avalonbuildingsystems.com

The Chilmark is a lovely and efficient contemporary home with a large living area. The plan also features three bedrooms and three half bathrooms.



The Chilmark

The Avalon Collection

Engineered homes built magnificently, promptly, affordably.

Contemporary Plan

3 Bedrooms
3 1/2 Baths

72'-0" x 29'-6"

1st Floor
1,770 s.f.

2nd Floor
897 s.f.

Total Finished Area
2,667 s.f.



560 Turnpike Street
Canton, MA 02021
Phone: 781-828-2100
Fax: 781-828-1050

Info@avalonbuildingsystems.com
www.avalonbuildingsystems.com

The Chilmark is a lovely and efficient contemporary home with a large living area. The plan also features three bedrooms and three half bathrooms.



The Chilmark

The Avalon Collection

Engineered homes built magnificently, promptly, affordably.

Contemporary Plan

3 Bedrooms
3 1/2 Baths

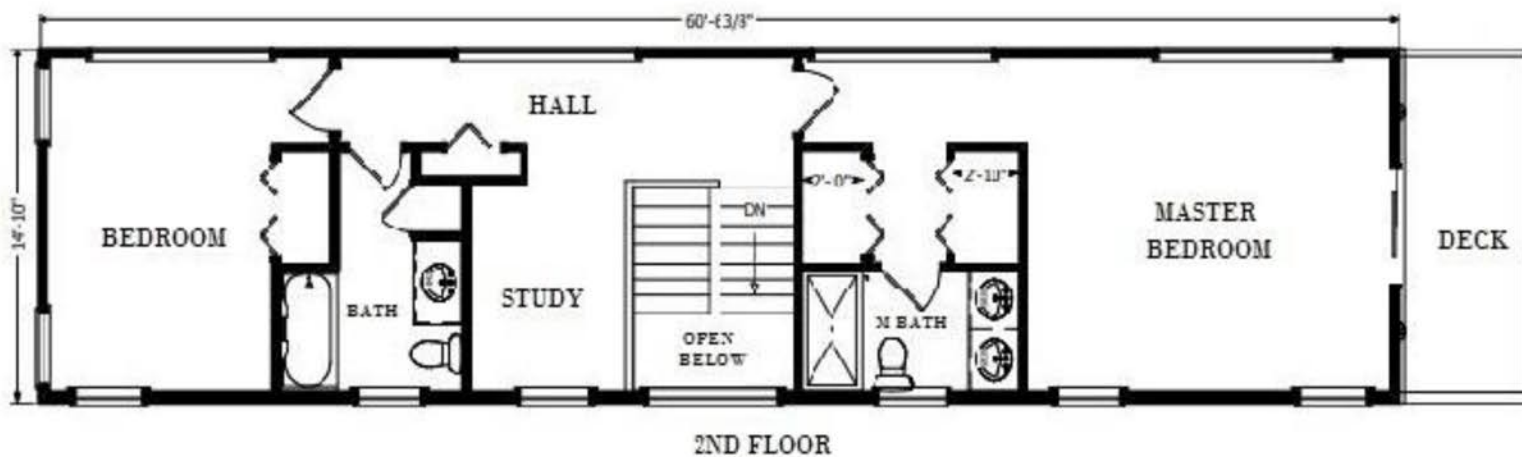
72'-0" x 29'-6"

1st Floor
1,770 s.f.

2nd Floor
897 s.f.

Total Finished Area
2,667 s.f.

The Chilmark is a lovely and efficient contemporary home with a large living area. The plan also features three bedrooms and three half bathrooms.



560 Turnpike Street
Canton, MA 02021
Phone: 781-828-2100
Fax: 781-828-1050

Info@avalonbuildingsystems.com
www.avalonbuildingsystems.com