

The Newbury

With Garage

The Avalon Collection

Engineered homes built magnificently, promptly, affordably.

Two Story Plan

3 Bedrooms /2.5
Baths

28'-6" x 27'-6"

1st Floor 784 s.f.

2nd Floor 784 s.f.

Total Living Area
1568 s.f.

Optional Garage
22' x 22'

The Newbury is a lovely and efficient colonial home with a large living area. The plan also features three bedrooms and two and half bathrooms. This plan also includes a garage and bonus room, above which flows perfectly with the floor plan.



560 Turnpike Street
Canton, MA 02021
Phone: 781-828-2100
Fax: 781-828-1050

Info@avalonbuildingsystems.com
www.avalonbuildingsystems.com

The Newbury

With Garage

The Avalon Collection

Engineered homes built magnificently, promptly, affordably.

Two Story Plan

3 Bedrooms / 2.5
Baths

28'-6" x 27'-6"

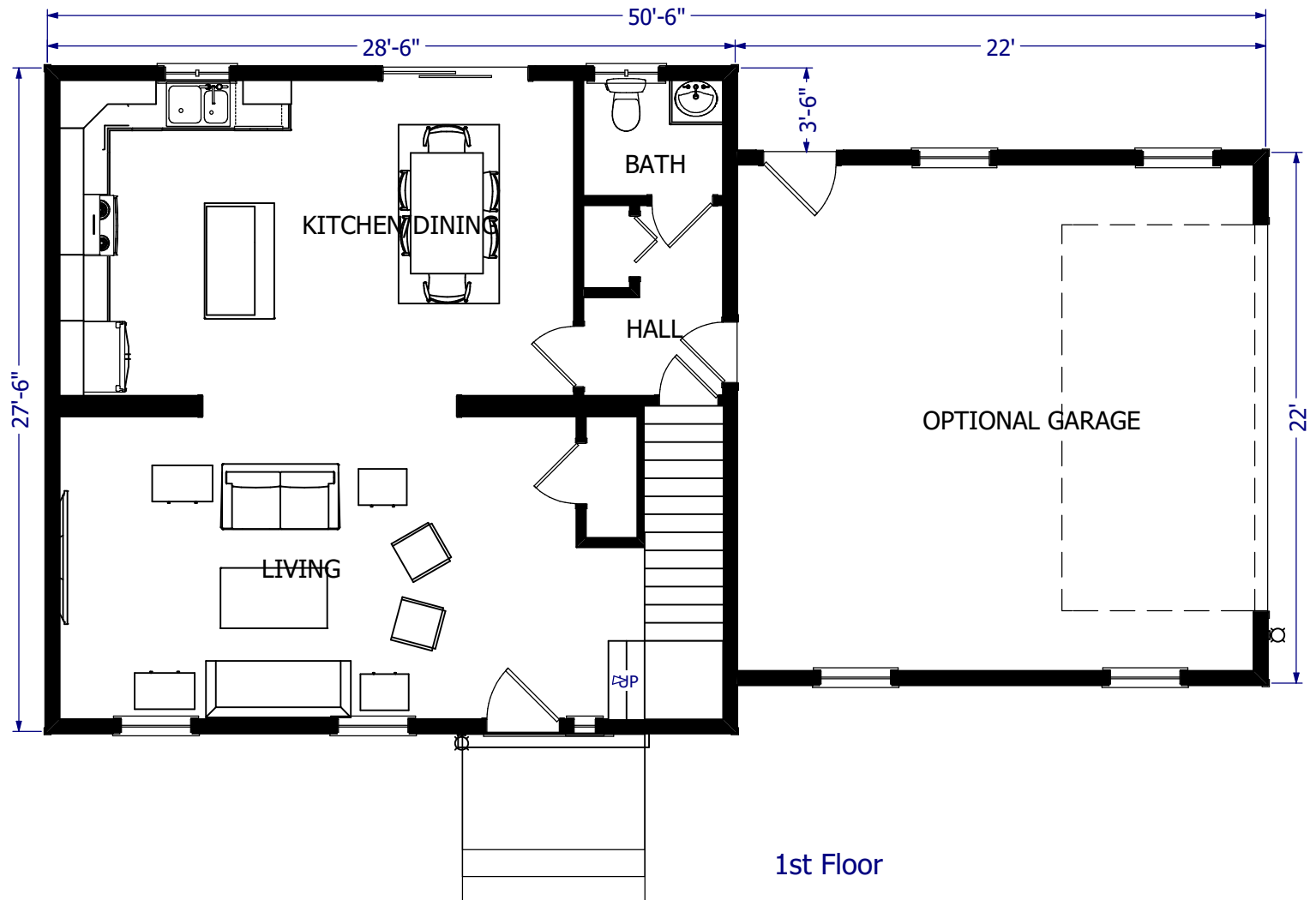
1st Floor 784 s.f.

2nd Floor 784 s.f.

Total Living Area
1568 s.f.

Optional Garage
22' x 22'

The Newbury is a lovely and efficient colonial home with a large living area. The plan also features three bedrooms and two and half bathrooms. This plan also includes a garage and bonus room, above which flows perfectly with the floor plan.



560 Turnpike Street
Canton, MA 02021

Phone: 781-828-2100

Fax: 781-828-1050

Info@avalonbuildingsystems.com
www.avalonbuildingsystems.com

The Newbury

With Garage

The Avalon Collection

Engineered homes built magnificently, promptly, affordably.

Two Story Plan

3 Bedrooms / 2.5
Baths

28'-6" x 27'-6"

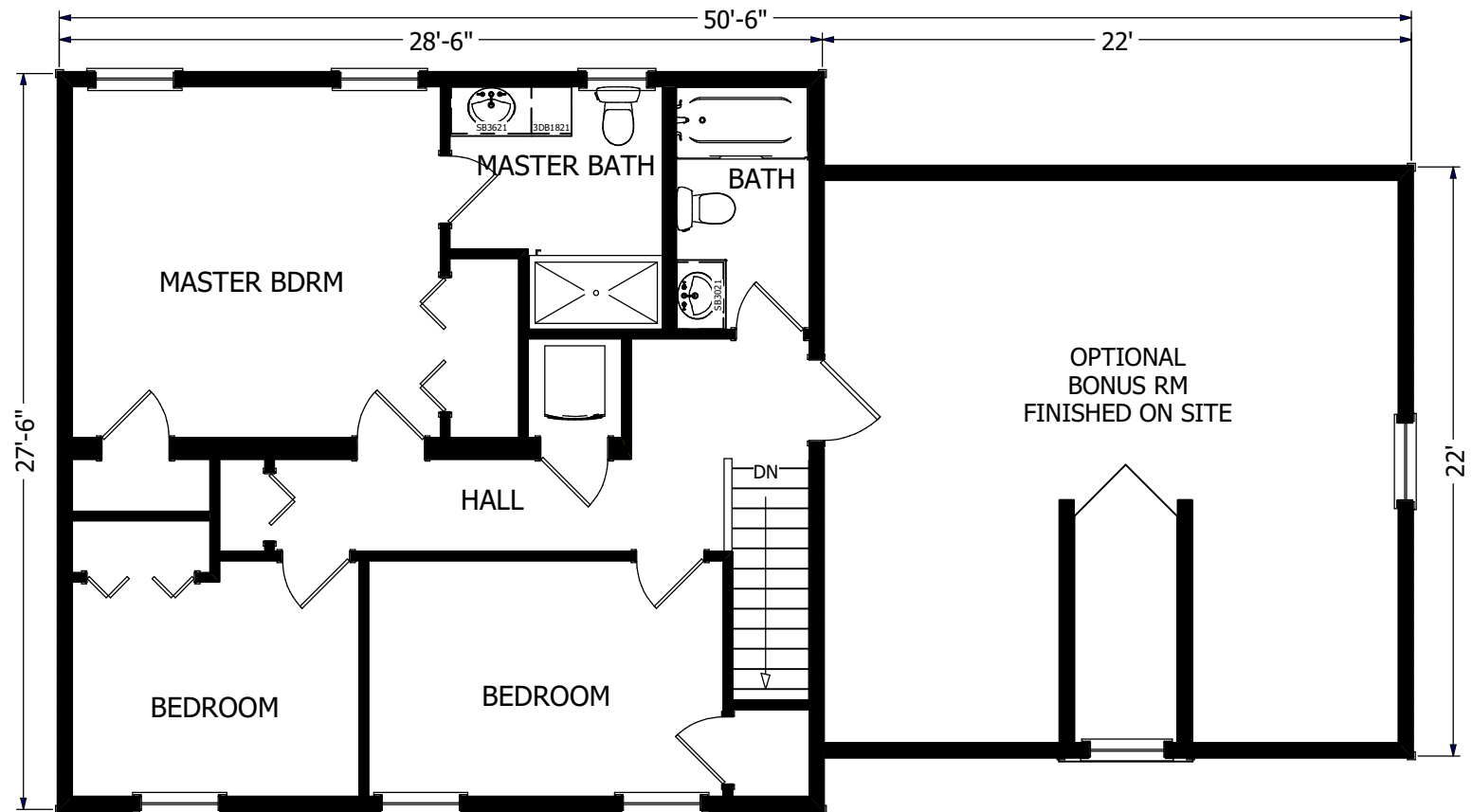
1st Floor 784 s.f.

2nd Floor 784 s.f.

Total Living Area
1568 s.f.

Optional Garage
22' x 22'

The Newbury is a lovely and efficient colonial home with a large living area. The plan also features three bedrooms and two and half bathrooms. This plan also includes a garage and bonus room, above which flows perfectly with the floor plan.



2nd Floor



560 Turnpike Street
Canton, MA 02021
Phone: 781-828-2100
Fax: 781-828-1050

Info@avalonbuildingsystems.com
www.avalonbuildingsystems.com