

General Office

The Avalon Collection

Engineered homes built magnificently, promptly, affordably.

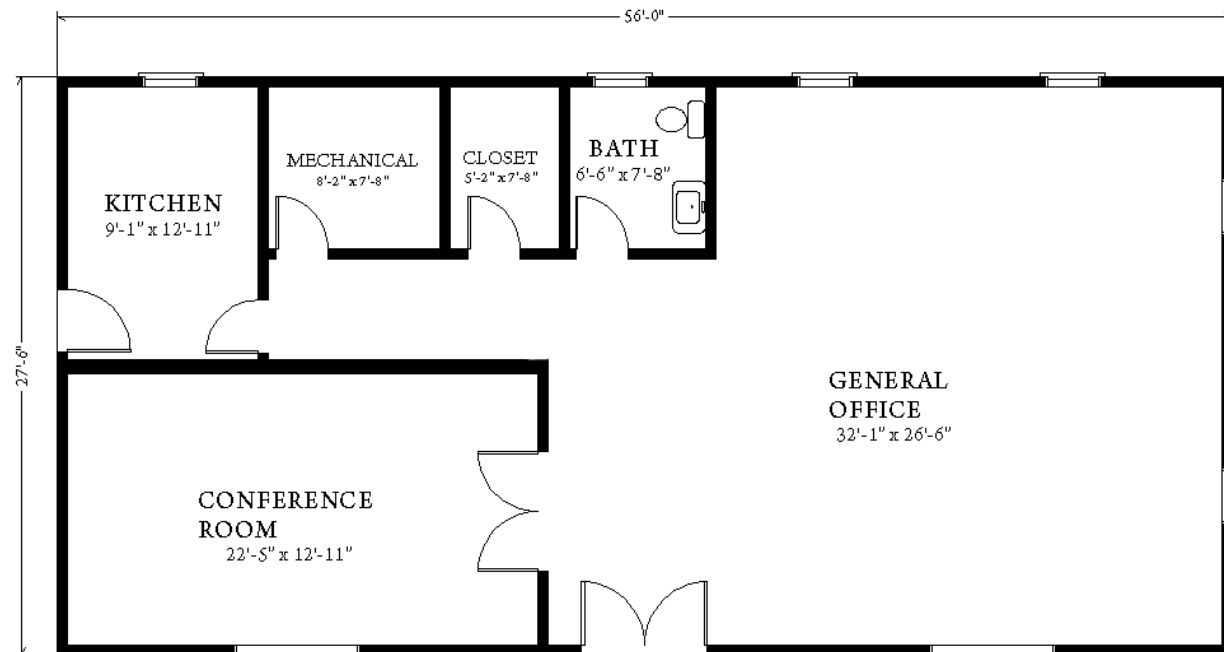
Commercial
General Office Building

27'-6" x 56'-0"

Total Square Footage: 1540 square feet



This General office building is a single floor design that is ideal for small to midsize companies and can be customized to meet specific needs of a company.



1st Floor



3 Porter Street, Suit 201
Stoughton, Ma 02072
Phone: 781-344-4875
Fax: 781-341-8321

Info@avalonbuildingsystems.com
www.avalonbuildingsystems.com