

The Chesapeake

The Avalon Collection

Engineered homes built magnificently, promptly, affordably.

Multifamily

3 Bedrooms / 2.5 Baths

29'-0" x 25'-0" (each unit)

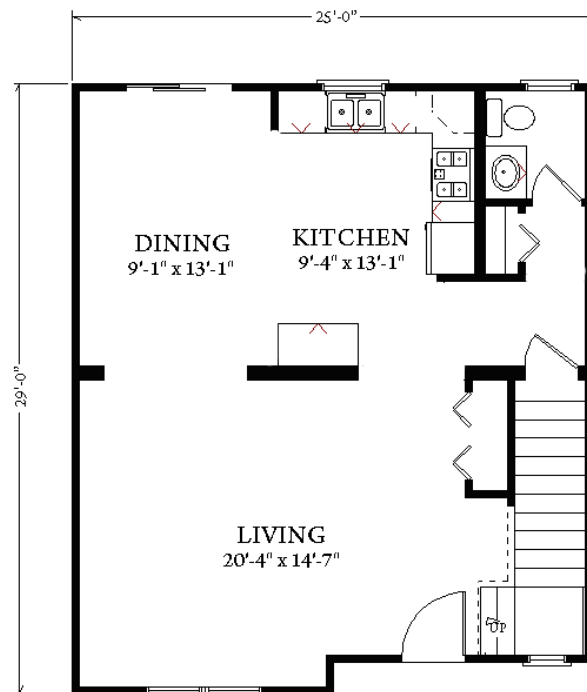
First Floor Square Footage: 700 s. f.

Second Floor: 700s. f.

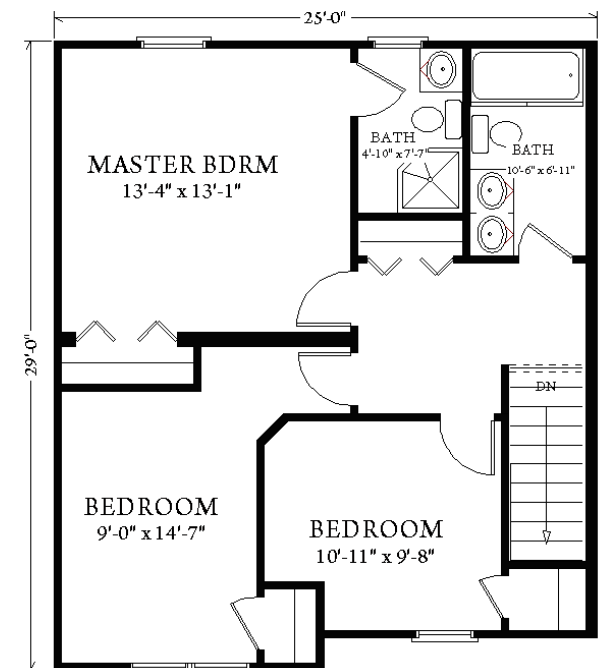
Total Square Footage: 1400 square feet



The Chesapeake plan is a multifamily plan which features three bedrooms in each unit. The plan contains two floors and the option to add as many units as necessary.



1st Floor



2nd Floor



3 Porter Street, Suit 201
Stoughton, Ma 02072
Phone: 781-344-4875
Fax: 781-341-8321

Info@avalonbuildingsystems.com
www.avalonbuildingsystems.com