

# The Westwood

# The Avalon Collection

*Engineered homes built magnificently, promptly, affordably.*

Single Story Plan

3 Bedrooms / 2 Baths

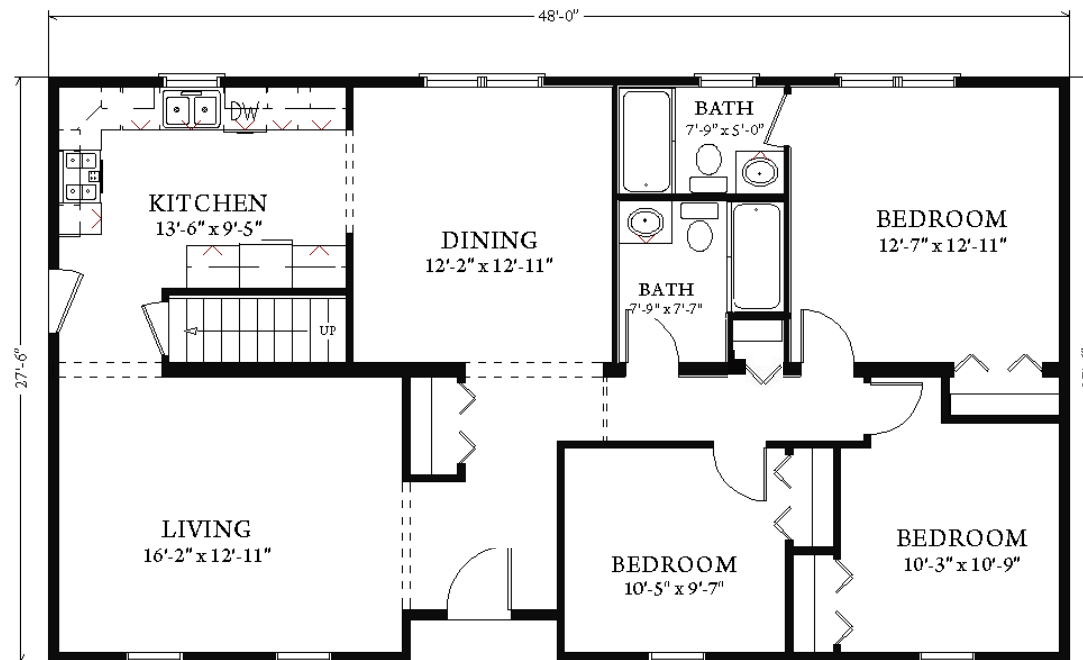
48'-0" x 27'-6"

Total finished area: 1320 s. f.



The Westwood is a cozy ranch plan that offers three bedrooms and two bathrooms. The plan also offers a sizable kitchen and dining area.

\* Can also be converted into a "split ranch" design.



3 Porter Street, Suit 201  
Stoughton, Ma 02072  
Phone: 781-344-4875  
Fax: 781-341-8321

Info@avalonbuildingsystems.com  
www.avalonbuildingsystems.com