

The Weston

The Avalon Collection

Engineered homes built magnificently, promptly, affordably.

Two Story Plan

4 Bedrooms / 3.5 Baths

28'-0" x 54'-0"

1st Floor : 1522 square feet

2nd Floor: 1492 square feet

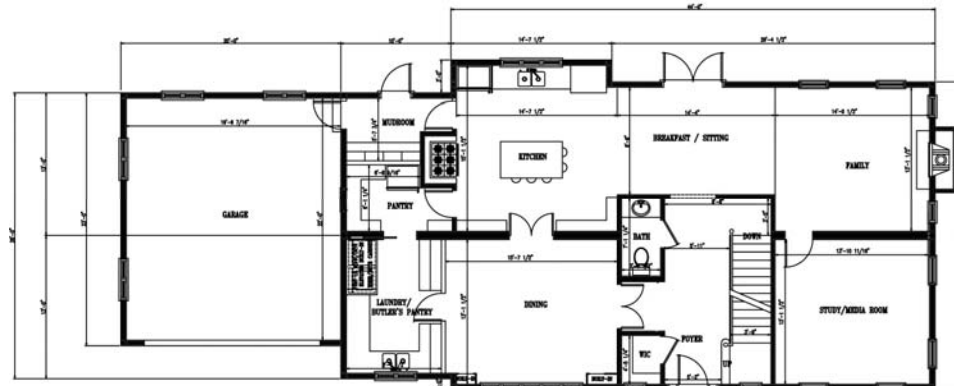
Total Square Footage: 3014 square feet

Optional 2 car garage: 460 square feet

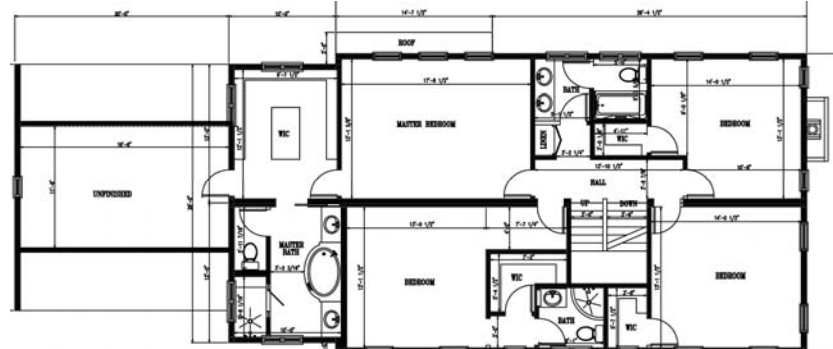
Opt. Bonus Area Above Garage: 225 s. f.



The Weston is a beautiful four bedroom , three and half bath colonial. The plan has a large kitchen and butlers pantry, as well as an optional space above the garage.



1st Floor



2nd Floor



3 Porter Street, Suit 201
Stoughton, Ma 02072
Phone: 781-344-4875
Fax: 781-341-8321

Info@avalonbuildingsystems.com
www.avalonbuildingsystems.com