

The Needham

The Avalon Collection

Engineered homes built magnificently, promptly, affordably.

Two Story Plan

4 Bedrooms / 2.5 Baths

54'-0" x 27'-6"

1st Floor: 1160 square feet

2nd Floor: 1485 square feet

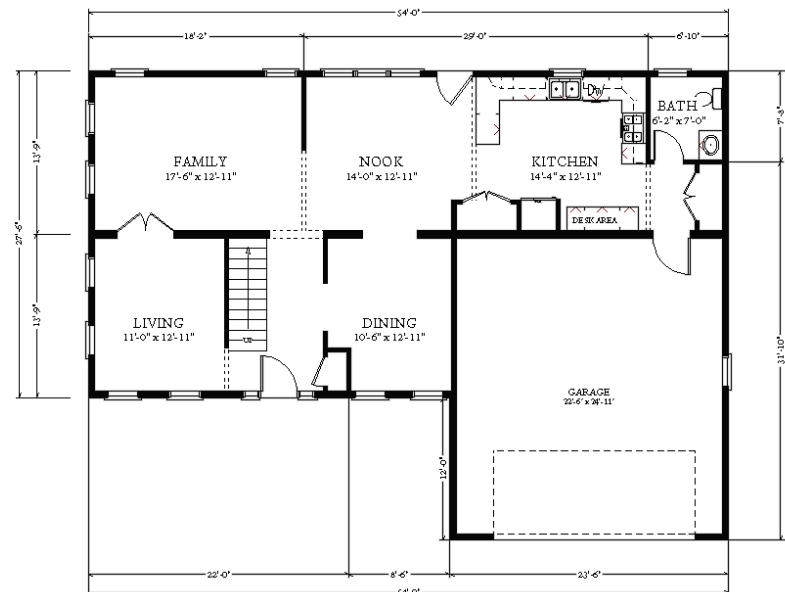
Total finished area: 2645 s. f.

Two Car Garage : 22' -6" x 25'

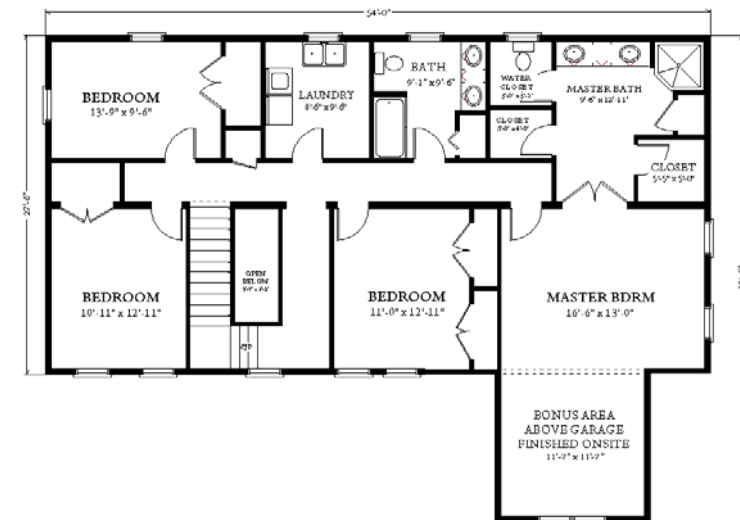
Optional Space Above: 133 s.f.



The Needham is a colonial plan which offers four bedrooms, two and half bathrooms, and a large second level laundry room. The plan includes a large open space plan on the first level.



1st Floor



2nd Floor



3 Porter Street, Suit 201
Stoughton, Ma 02072
Phone: 781-344-4875
Fax: 781-341-8321

Info@avalonbuildingsystems.com
www.avalonbuildingsystems.com