

The Mt. Washington

The Avalon Collection

Engineered homes built magnificently, promptly, affordably.

Single Story Plan

3 Bedrooms / 2 Baths

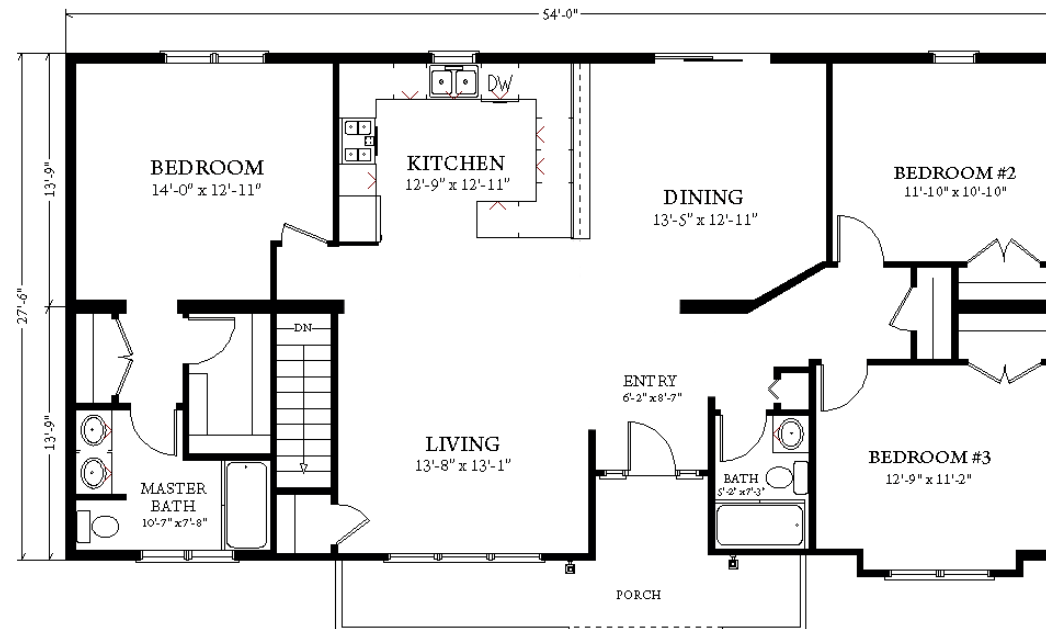
27'-6" x 54'-0"

Total Square Footage: 1485 square feet

Optional Porch as shown



The Mount Washington plan offers an open space plan with a large living room which flows into the dining room and kitchen. The plans also has a large master suite and two additional bedrooms.



3 Porter Street, Suit 201
Stoughton, Ma 02072
Phone: 781-344-4875
Fax: 781-341-8321

Info@avalonbuildingsystems.com
www.avalonbuildingsystems.com