

The Marblehead

The Avalon Collection

Engineered homes built magnificently, promptly, affordably.

Single Story Plan

3 Bedrooms / 2 Baths

41'-3" x 49'-11"

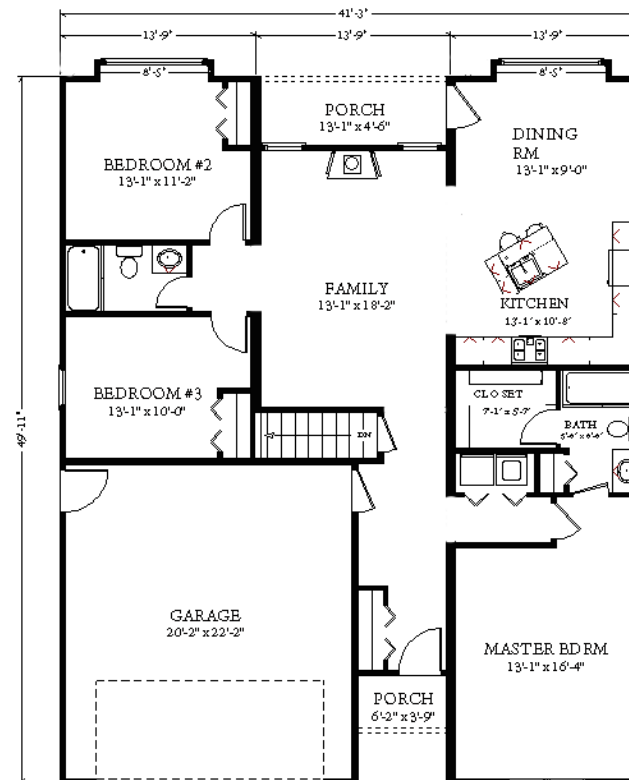
Total Living Area: 1500 square feet

Two car garage: 445 square feet

Total Square Footage: 1,945 s.f.



The Marblehead is a lovely single story plan with three bedrooms and two bathrooms. The plan has a large family room in the center of the home with an optional fireplace.



3 Porter Street, Suit 201
Stoughton, Ma 02072
Phone: 781-344-4875
Fax: 781-341-8321

Info@avalonbuildingsystems.com
www.avalonbuildingsystems.com