

The Manchester

The Avalon Collection

Engineered homes built magnificently, promptly, affordably.

Two Story Plan

4 Bedrooms / 3.5 Baths

27' - 6" x 56' - 0"

1st Floor : 1550 square feet

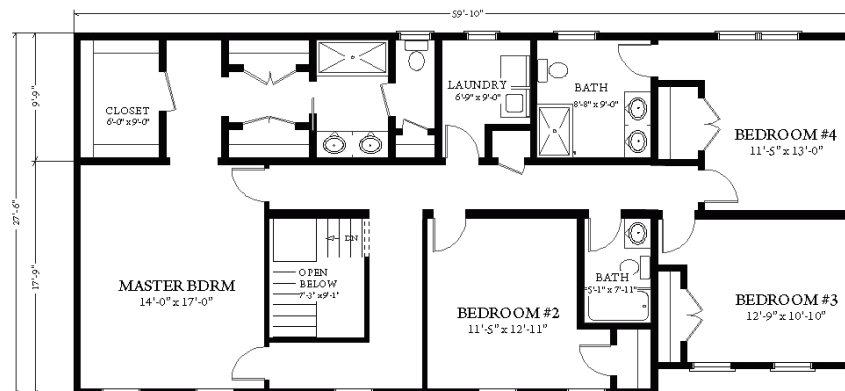
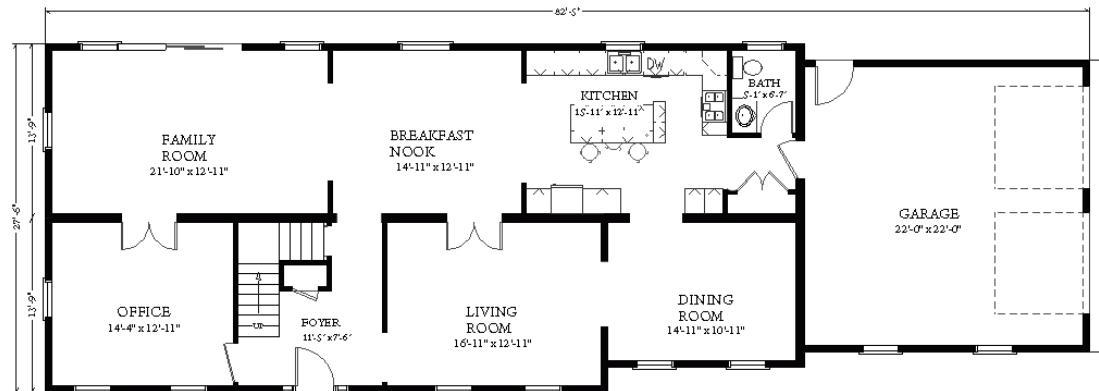
2nd Floor: 1550 square feet

Total Square Footage: 3100 square feet

Optional 2 car garage: 485 square feet



The Manchester is a grand four bedroom colonial with a large open space plan. The plan boasts a large family room which flows into the kitchen and breakfast area.



3 Porter Street, Suit 201
Stoughton, Ma 02072
Phone: 781-344-4875
Fax: 781-341-8321

Info@avalonbuildingsystems.com
www.avalonbuildingsystems.com