

The Lakeville

The Avalon Collection

Engineered homes built magnificently, promptly, affordably.

Single Story Plan

3 Bedrooms / 2 Baths

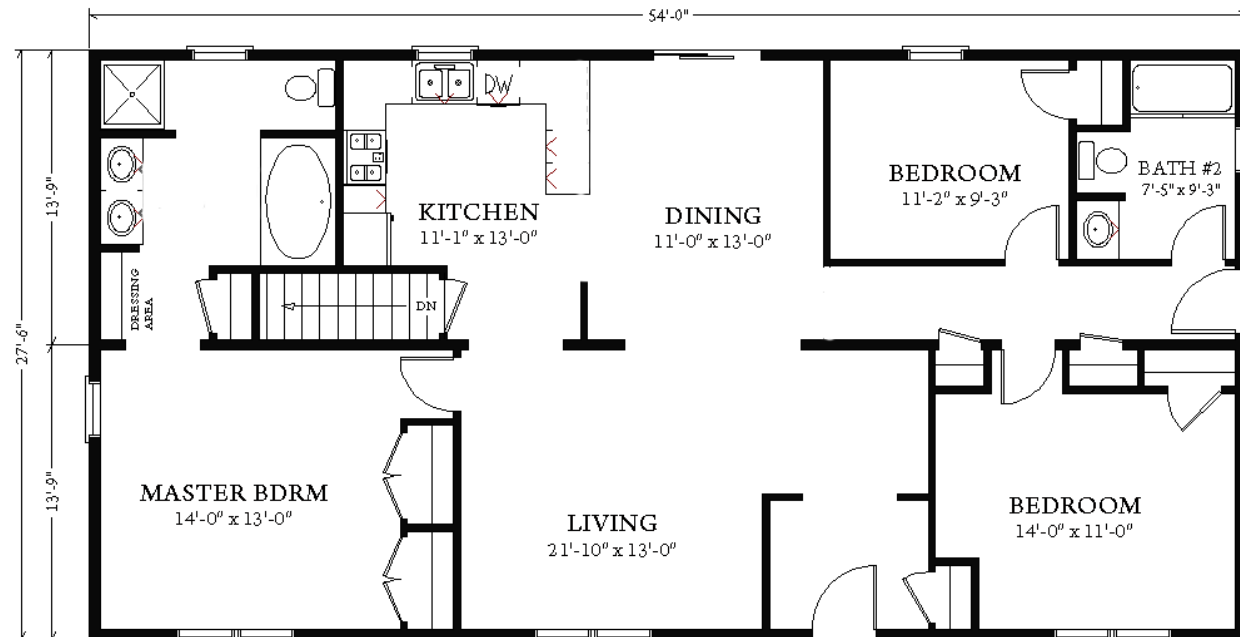
27'-6" x 54'-0"

Total Square Footage: 1485 square feet



The Lakeville is a traditional ranch plan which offers a large master bedroom suite, as well as two additional bedrooms. The plan also boasts a open floor plan a large living room.

* Can also be converted into a "split ranch" design.



3 Porter Street, Suit 201
Stoughton, Ma 02072
Phone: 781-344-4875
Fax: 781-341-8321

Info@avalonbuildingsystems.com
www.avalonbuildingsystems.com