

The Duxbury

The Avalon Collection

Engineered homes built magnificently, promptly, affordably.

Single Story Plan

3 Bedrooms / 2 Baths

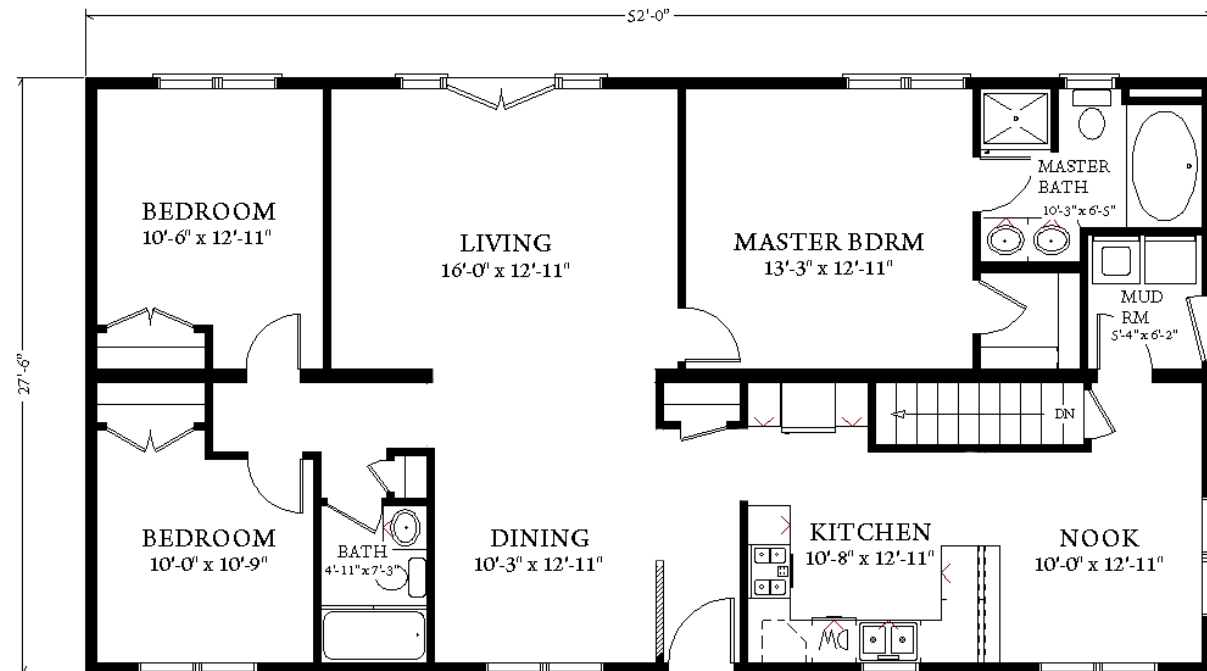
27'-6" x 52'-0"

Total Square Footage: 1430 square feet

Optional Porch as shown



The Duxbury is a great ranch plan with three bedrooms, and two bathrooms and a kitchen that opens up to a bright breakfast area.



3 Porter Street, Suit 201
Stoughton, Ma 02072
Phone: 781-344-4875
Fax: 781-341-8321

Info@avalonbuildingsystems.com
www.avalonbuildingsystems.com