

The Hyannis

The Avalon Collection

Engineered homes built magnificently, promptly, affordably.

Cape Style Plan

3 Bedrooms / 2.5 Baths

32'-6" x 50'-0"

First Floor Square Footage: 1375 s. f.

Second Floor: 750 s. f.

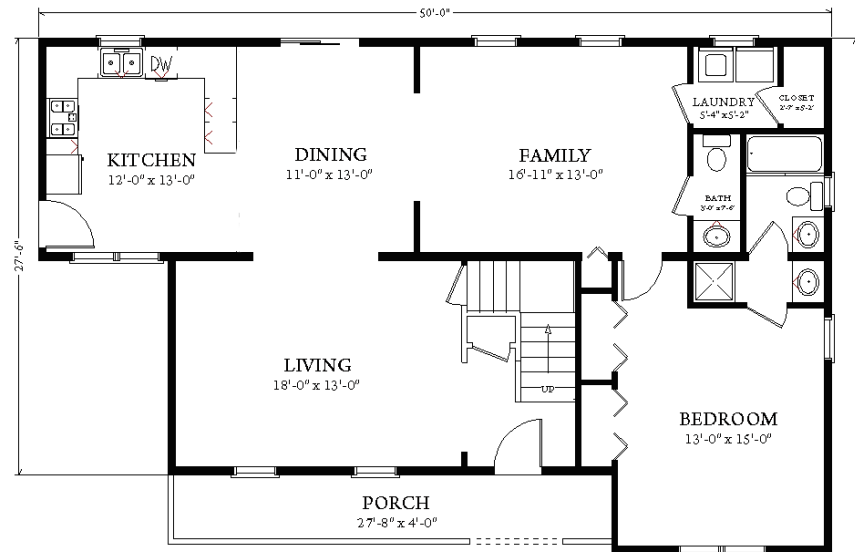
To Be Finished Onsite

Total Square Footage: 2125 square feet

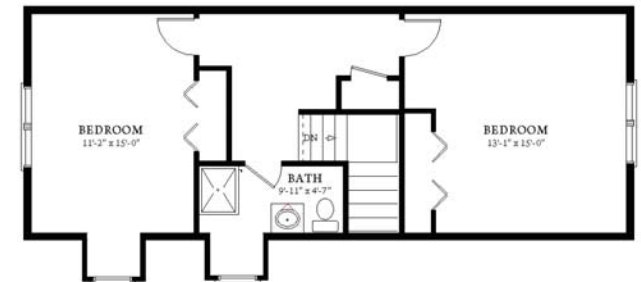
Optional Porch and Dormers as Shown



The Hyannis is a wonderful cape style plan which offers a large first floor bedroom and bathroom. The plans also offers an open floor plan with a living room and family room off of the dining room and kitchen. The suggested second floor plan offers two additional bedrooms and a bathroom.



1st Floor



Proposed 2nd Floor

(To be Finished Onsite)



3 Porter Street, Suit 201
Stoughton, Ma 02072
Phone: 781-344-4875
Fax: 781-341-8321

Info@avalonbuildingsystems.com
www.avalonbuildingsystems.com