

The Essex

The Avalon Collection

Engineered homes built magnificently, promptly, affordably.

Cape Style Plan

4 Bedrooms / 3 Baths

27'-6" x 52'-0"

First Floor Square Footage: 1430 s. f.

Second Floor: 850 s. f.

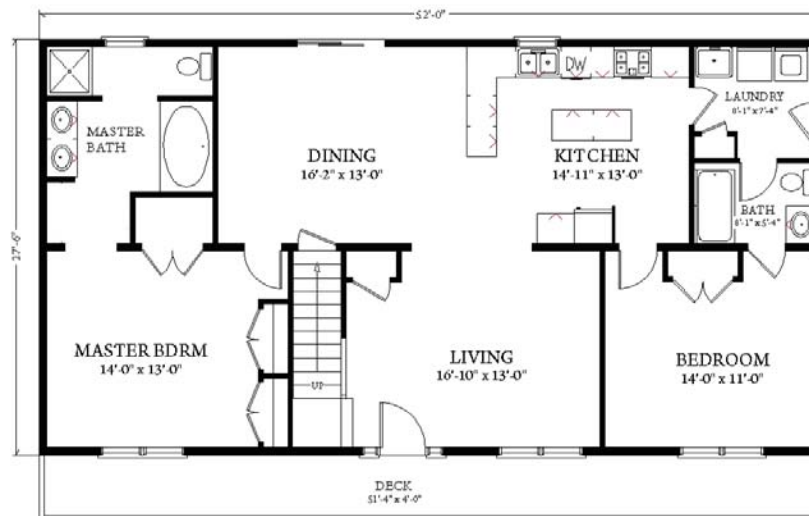
To Be Finished Onsite

Total Square Footage: 1640 square feet

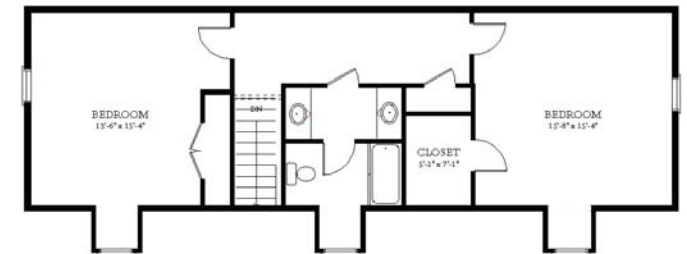
Optional Porch as Shown



The Cape Essex is a lovely four bedroom cape which features the master bedroom suite on the 1st floor. The plan also a large kitchen and dining area which flow well into the living room.



1st Floor



Proposed 2nd Floor
(To be Finished Onsite)



3 Porter Street, Suit 201
Stoughton, Ma 02072
Phone: 781-344-4875
Fax: 781-341-8321

Info@avalonbuildingsystems.com
www.avalonbuildingsystems.com