

# The Brookfield

# The Avalon Collection

*Engineered homes built magnificently, promptly, affordably.*

Cape Style Plan

4 Bedrooms / 3 Baths

37'- 8" x 50' -6"

First Floor Square Footage: 1760 s. f.

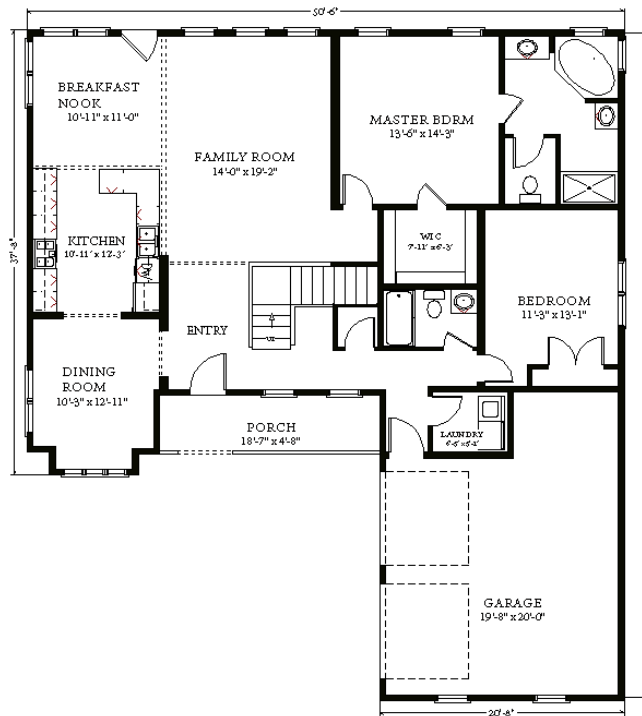
Second Floor: 640s. f.

(To Be Finished Onsite)

Total Square Footage: 2400 square feet

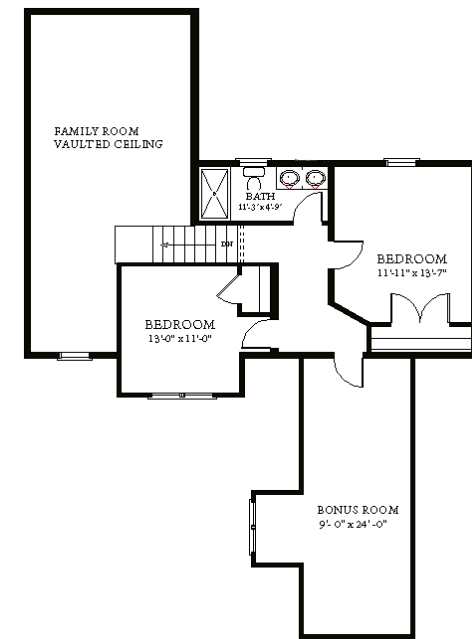
Garage: 400 square feet

Optional Bonus room above Garage:  
220 s. f.



1st Floor

The Brookfield is a atypical cape plan which offers a large open floor plan with four bedrooms including a first floor master suite. The plans also offers optional tray ceilings in master bedroom and dining room and a bonus room above the garage.



Proposed 2nd Floor

(To be Finished Onsite)



3 Porter Street, Suit 201  
Stoughton, Ma 02072  
Phone: 781-344-4875  
Fax: 781-341-8321

Info@avalonbuildingsystems.com  
www.avalonbuildingsystems.com