

The Beverly

The Avalon Collection

Engineered homes built magnificently, promptly, affordably.

Cape Style Plan

3 Bedrooms / 2 Bath

27'-6" x 29'-0"

First Floor Square Footage: 798 s. f.

Second Floor Square Footage: 450 s.f.

(To Be Finished Onsite)

Total Square Footage: 1248 square feet



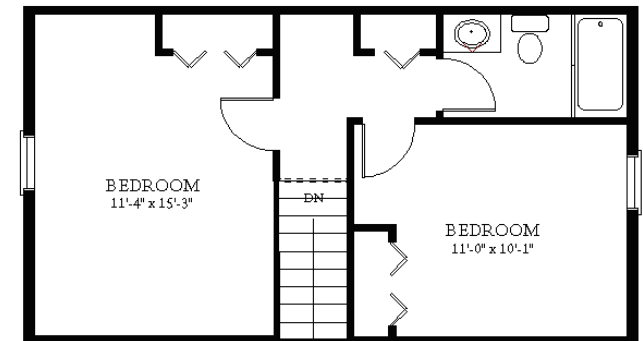
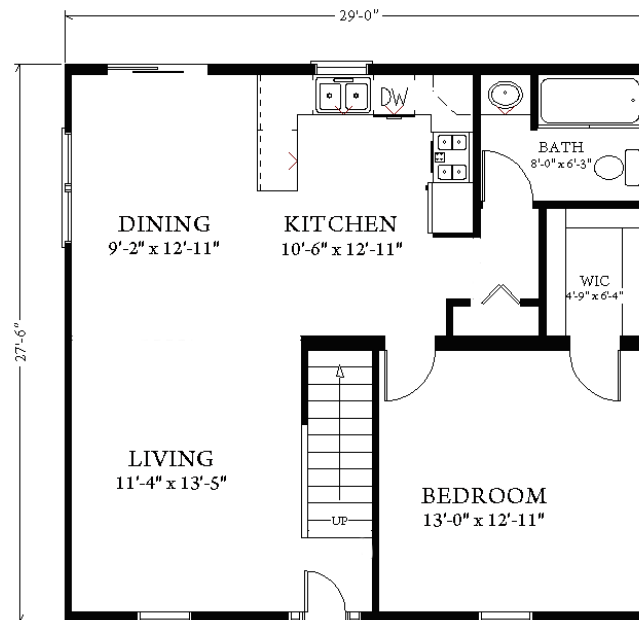
The Beverly is a small cape style home which offers one bedroom and bathroom on the first floor, and an additional two bedrooms and bathroom on the proposed 2nd floor. The plan also offers an open living area.



3 Porter Street, Suit 201
Stoughton, Ma 02072
Phone: 781-344-4875
Fax: 781-341-8321

Info@avalonbuildingsystems.com
www.avalonbuildingsystems.com

1st Floor



Proposed 2nd Floor (To Be Finished Onsite)