

# The Winthrop

# The Avalon Collection

*Engineered homes built magnificently, promptly, affordably.*

3 Story Apartment Building

3 Apartment Units

Each unit:

3 Bedrooms / 1 Bath

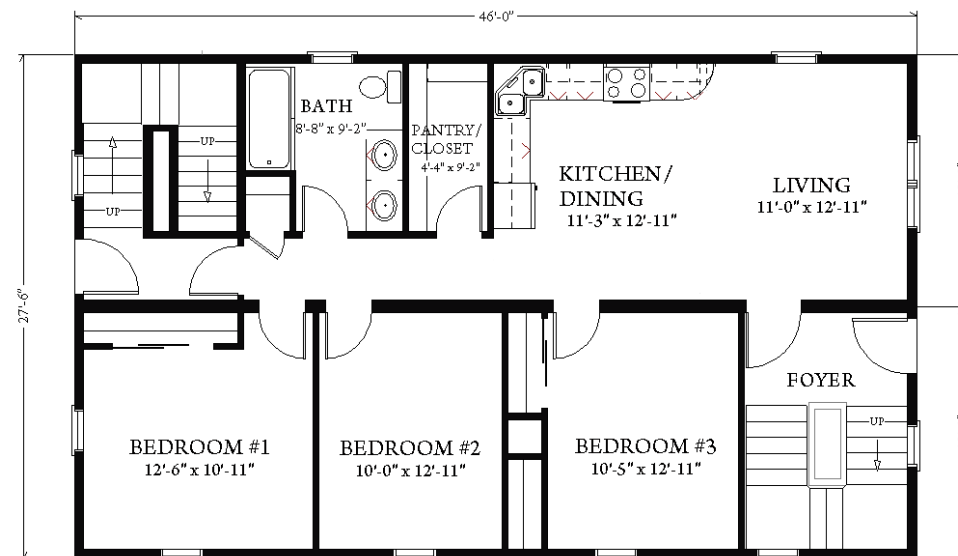
46'-0" x 27'-6" (each unit)

Total Square Footage: 3795 square feet



The Winthrop plan is a three story multifamily plan with a unit on each level. Each unit features three bedrooms and one bathroom. There is also access from two stair wells in the front and rear of the building. This plan is a great option for tight lots.

Typical Floor plan



3 Porter Street, Suit 201  
Stoughton, Ma 02072  
Phone: 781-344-4875  
Fax: 781-341-8321

Info@avalonbuildingsystems.com  
www.avalonbuildingsystems.com