

The Salisbury

The Avalon Collection

Engineered homes built magnificently, promptly, affordably.

Two Story Plan

4 Bedrooms / 2.5 Baths

27' -6" x 36' -8"

1st Floor: 1008 square feet

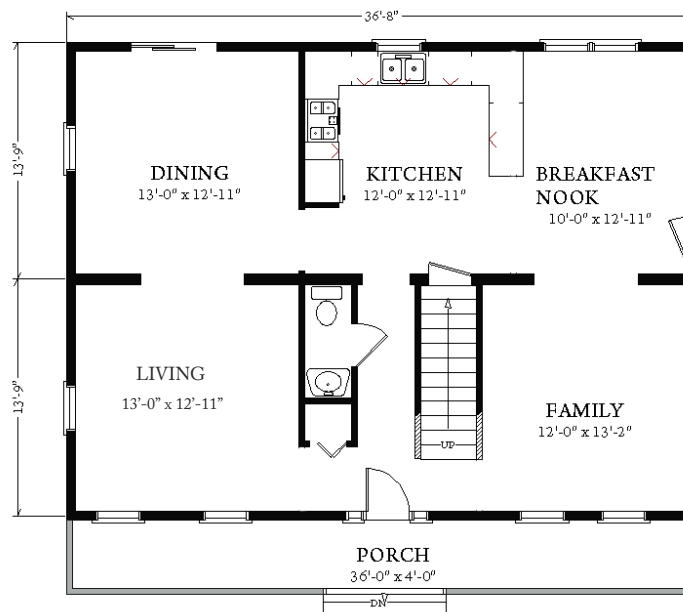
2nd Floor: 1008 square feet

Total finished area: 2016 s. f.

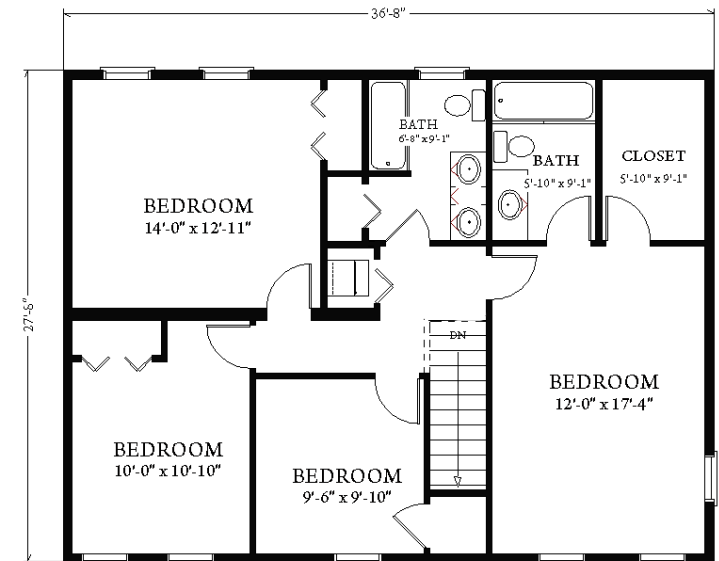
Optional Porch Shown



The Salisbury plan offers a great open floor plan which includes four bedrooms on the second floor as well as two full bathrooms. The first floor offers a large eat-in kitchen, which opens to a family room.



1st Floor



2nd Floor



3 Porter Street, Suit 201
Stoughton, Ma 02072
Phone: 781-344-4875
Fax: 781-341-8321

Info@avalonbuildingsystems.com
www.avalonbuildingsystems.com