

The Lynnfield

The Avalon Collection

Engineered homes built magnificently, promptly, affordably.

Townhouses

Typical unit:

2 Bedrooms / 3 Bath

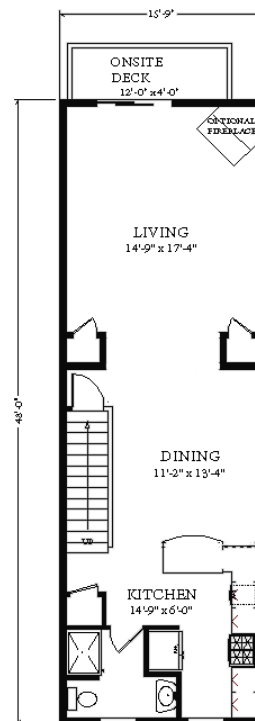
48'-0" x 15'-9" (each unit)

Unit Square Footage: 1512 s.f.

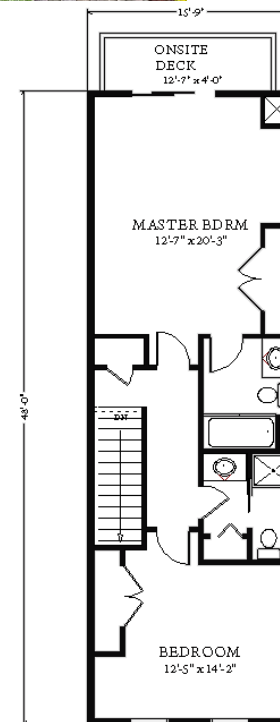
Total Square Footage: 6048 square feet



The Lynnfield plan is a townhouse style plan. Each unit features two bedrooms and three bathrooms. The kitchen and living area is an open floor plan. There is also an option build garage below as shown.



1st Floor plan



2nd Floor plan



3 Porter Street, Suit 201
Stoughton, Ma 02072
Phone: 781-344-4875
Fax: 781-341-8321

Info@avalonbuildingsystems.com
www.avalonbuildingsystems.com