

The Hudson

The Avalon Collection

Engineered homes built magnificently, promptly, affordably.

Multi-Family

Typical unit:

2 Bedrooms / 1Bath

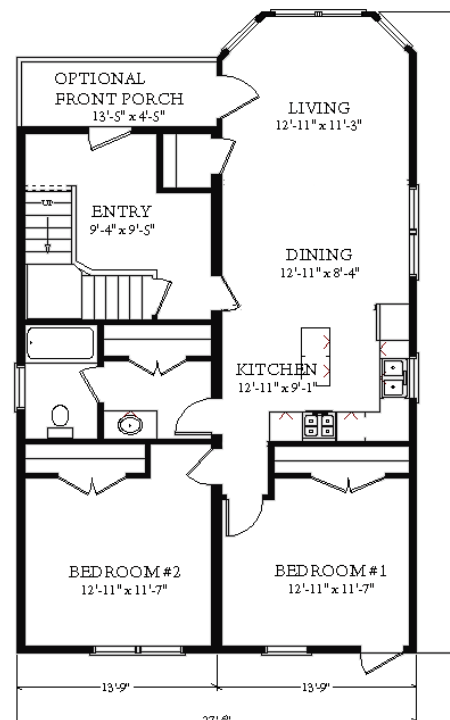
44'- 3" x 27' -6" (each unit)

Unit Square Footage: 1100 s.f. approx.

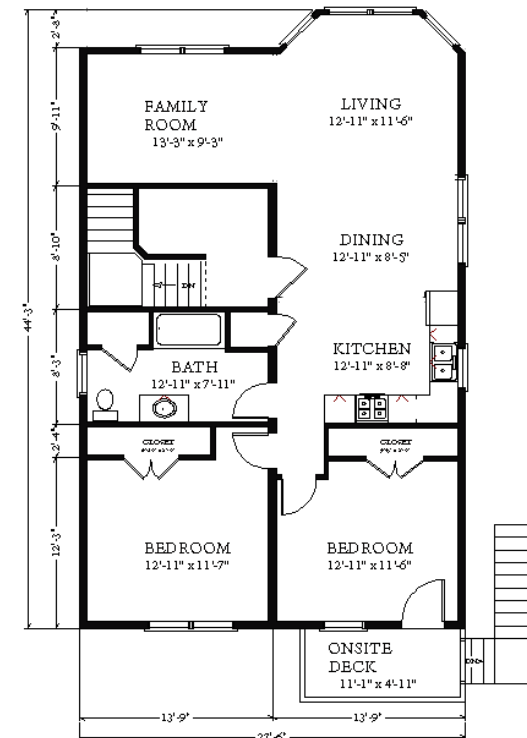
Total Square Footage: 2200 square feet



The Hudson is a multi-family style plan. Each unit features two bedrooms and one bathroom. The kitchen and living area is an open floor plan. The plan is great for a tight lot because the units are stacked.



1st Floor plan



2nd Floor plan



3 Porter Street, Suit 201
Stoughton, Ma 02072
Phone: 781-344-4875
Fax: 781-341-8321

Info@avalonbuildingsystems.com
www.avalonbuildingsystems.com