

# Three Bedroom Model

# The Avalon Collection

*Engineered homes built magnificently, promptly, affordably.*

Single Story Plan

3 Bedrooms / 1 Bath

24'-0" x 34'-0"

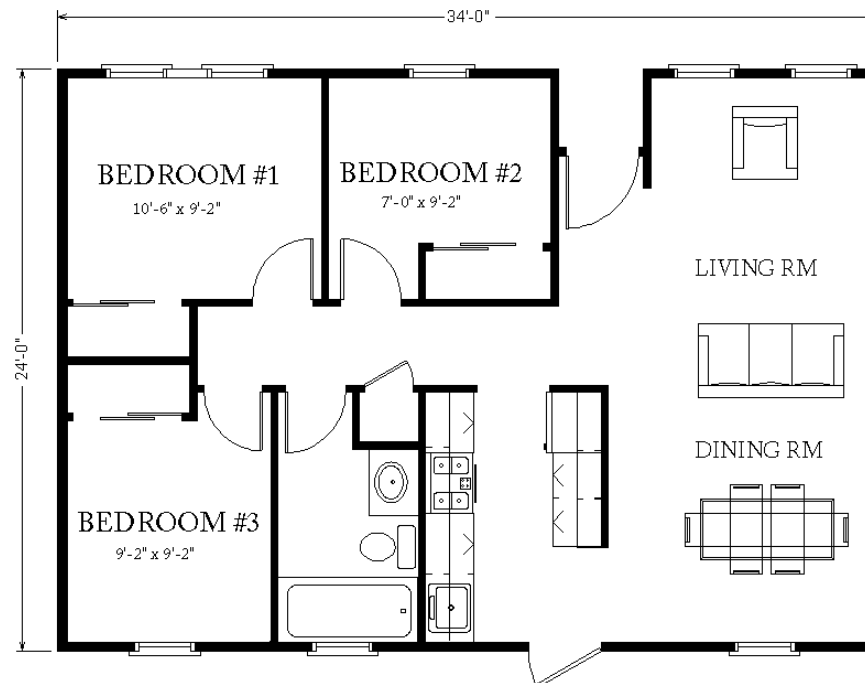
Total Square Footage: 816 square feet

Total Square Meters: 75.8 square meters



A basic, efficient dwelling unit, ideal for housing in developing countries, emergencies, military, student housing and camps.

(Available in SIPS and Modular)



3 Porter Street, Suit 201  
Stoughton, Ma 02072  
Phone: 781-344-4875  
Fax: 781-341-8321

Info@avalonbuildingsystems.com  
www.avalonbuildingsystems.com