

# Two Bedroom Model

# The Avalon Collection

*Engineered homes built magnificently, promptly, affordably.*

Single Story Plan

2 Bedrooms / 1 Bath

(Also Available in 1 Bedroom)

13'-9" x 46'-0"

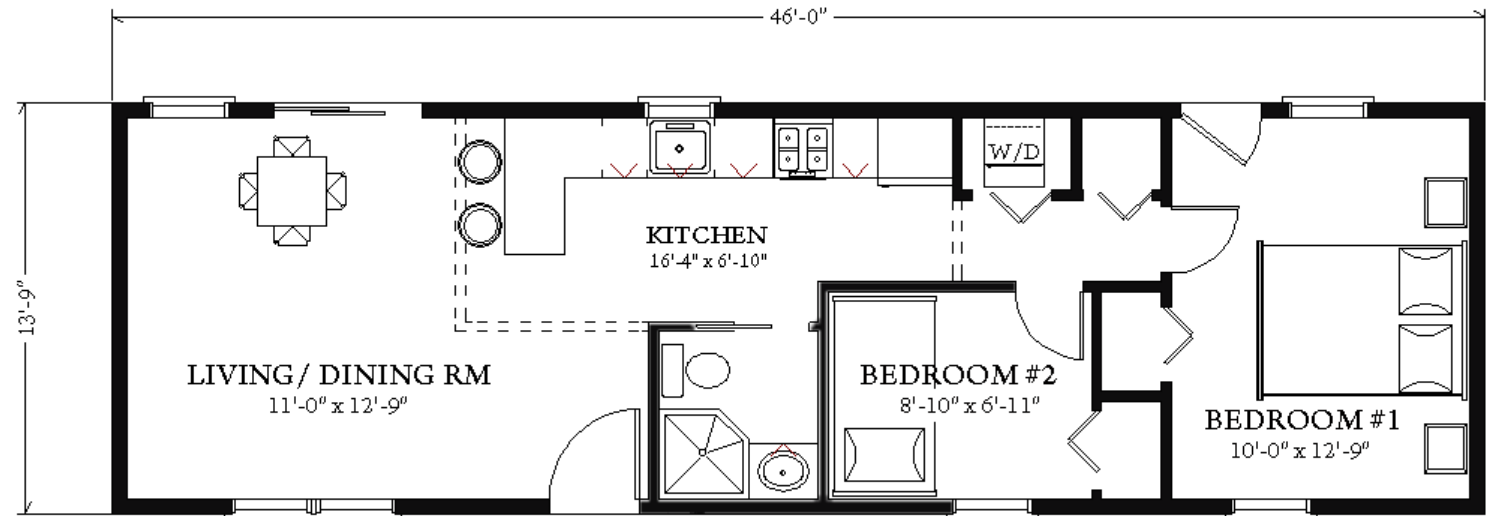
Total Square Footage: 632.5 square ft

Total Square Meters: 58.7 square meters



A basic, efficient dwelling unit, ideal for housing in developing countries, emergencies, military, student housing and camps.

(Available in SIPS and Modular)



3 Porter Street, Suit 201  
Stoughton, Ma 02072  
Phone: 781-344-4875  
Fax: 781-341-8321

Info@avalonbuildingsystems.com  
www.avalonbuildingsystems.com